

# PARAMOUNT



A Smarter Way to Build<sup>®</sup>

REDMAN  HOMES<sup>®</sup>

Take a  
Virtual Tour



28' WIDES



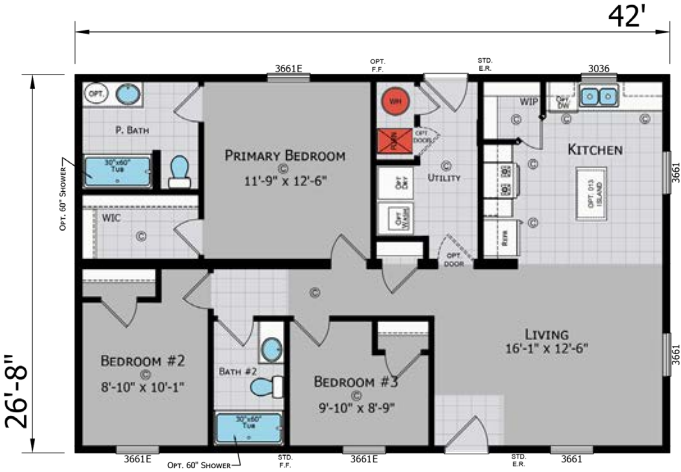




# APPLETON

## APPLETON 2842

3 Bedroom  
2 Bath  
1,120 Sq Ft



Optional Porch

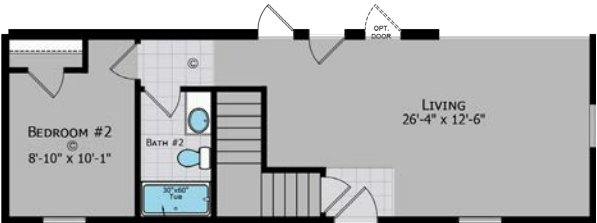
# APPLETON OPTIONS



Bedroom 2



Ultimate Kitchen 2

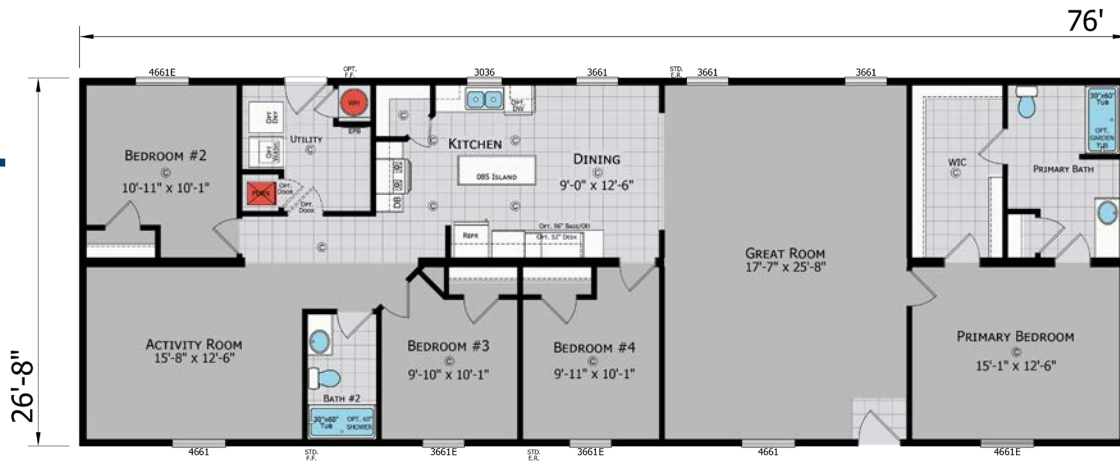


Stairwell W/ Bedroom 2

# BALDWIN

## BALDWIN 2876

4 Bedroom  
2 Bath  
2,027 Sq Ft



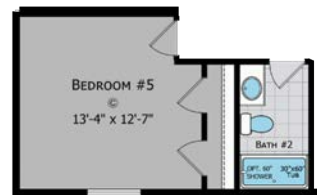
## BALDWIN OPTIONS



Kitchen W/ Formal Dining  
Replaces 4th Bedroom



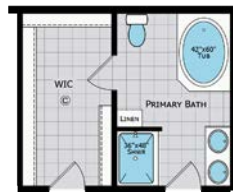
Ultimate Kitchen 2



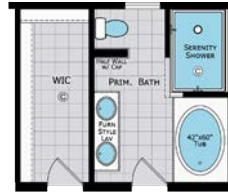
Bedroom 5



Stairwell



Primary Bath



Serenity Bath



Foyer

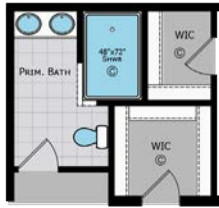
# BAY PORT

## BAY PORT 2856

3 Bedroom  
2 Bath  
1,493 Sq Ft



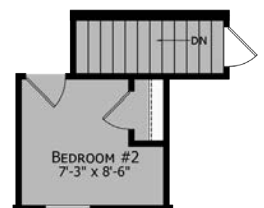
# BAY PORT OPTIONS



Serenity Bath



Ultimate Kitchen 2



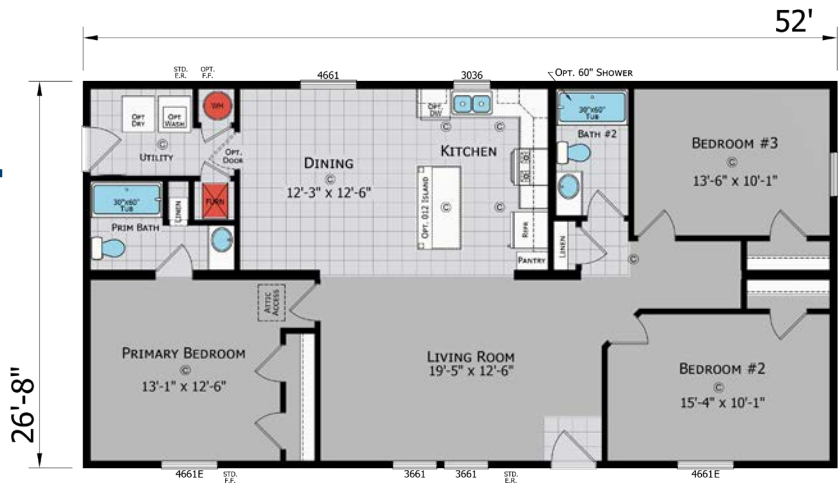
Stairwell



# BAYFIELD

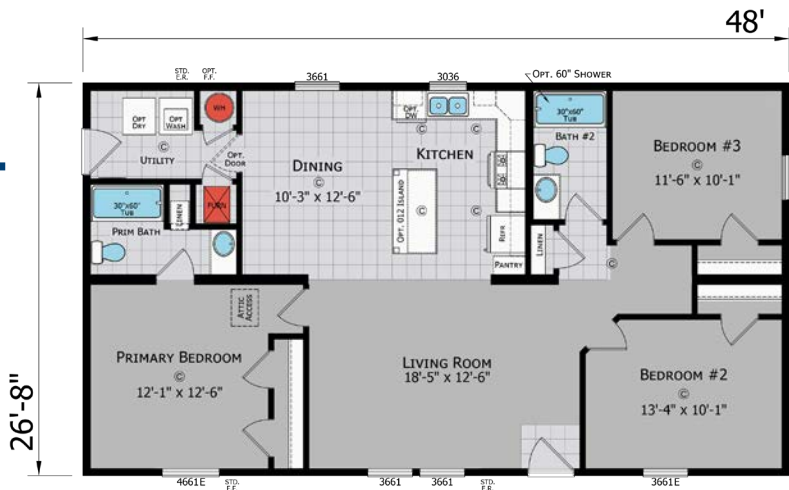
## BAYFIELD 2852

3 Bedroom  
2 Bath  
1,387 Sq Ft



## BAYFIELD 2848

3 Bedroom  
2 Bath  
1,227 Sq Ft

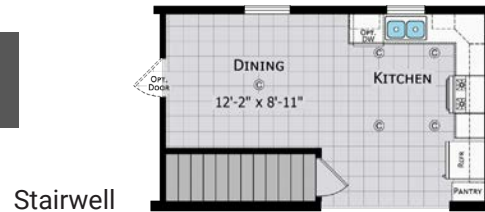


## BAYFIELD 2844

3 Bedroom  
2 Bath  
1,173 Sq Ft



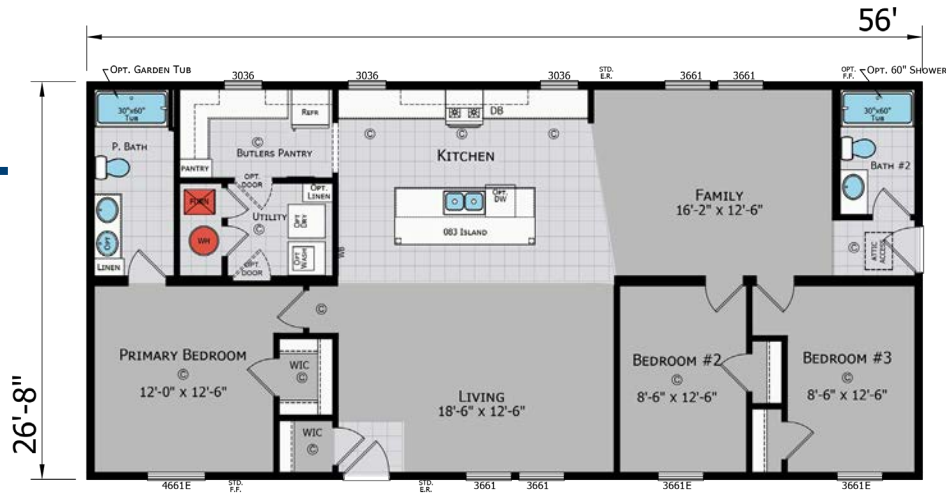
# BAYFIELD OPTIONS



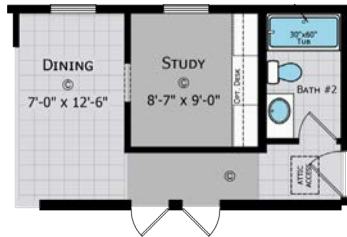
# BELVIDERE

**BELVIDERE**  
**2856**

3 Bedroom  
2 Bath  
1,493 Sq Ft



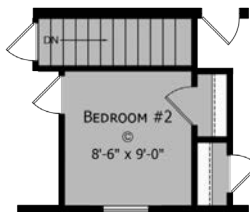
## BELVIDERE OPTIONS



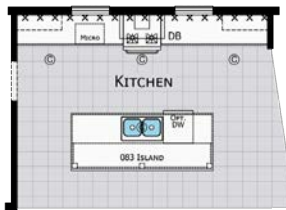
Study/Dining Room



Utility Room



Stairwell



Kitchen



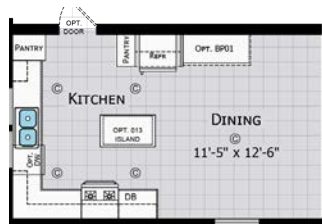
# BRIGHTON

## BRIGHTON 2848

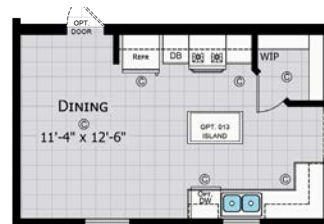
3 Bedroom  
2 Bath  
1,280 Sq Ft



## BRIGHTON OPTIONS



Kitchen 1



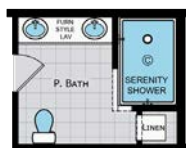
Kitchen 2



Stairwell



Summit Kitchen  
Available W/ Stone  
Countertops



Serenity Bath

# EASTON

## EASTON 2860

3 Bedroom  
2 Bath  
1,600 Sq Ft



## EASTON 2856

3 Bedroom  
2 Bath  
1,493 Sq Ft

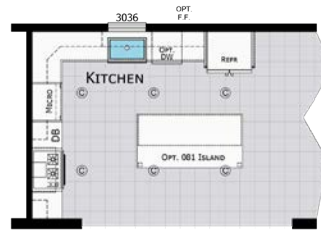


Take a  
Virtual Tour

# EASTON OPTIONS



Stairwell



Ultimate Kitchen 2



Luxe Shower



Summit Kitchen  
Available W/ Stone  
Countertops



Double Island

# FILLMORE

**FILLMORE**  
**2864**

3 Bedroom  
2 Bath  
1,707 Sq Ft



## FILLMORE OPTIONS



Ultimate Kitchen 2



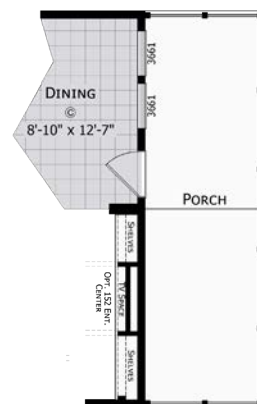
Stairwell



Half Bath



Serenity Bath



Porch

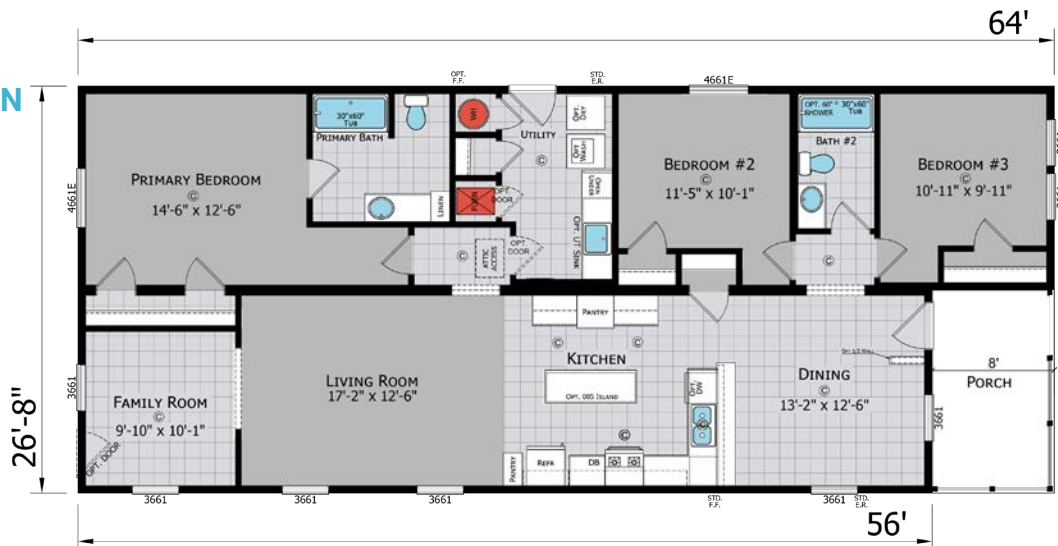


Primary Bath

# GEORGETOWN

## GEORGETOWN 2864

3 Bedroom  
2 Bath  
1,600 Sq Ft



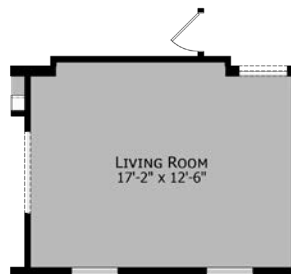
## GEORGETOWN OPTIONS



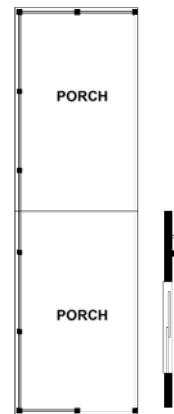
Ultimate Kitchen 2



Stairwell



Family Room Offset



Porch



Primary Bath



Serenity Bath



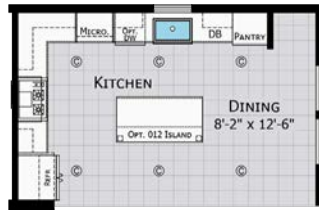
# LANCASTER

## LANCASTER 2848

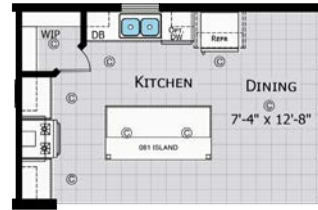
3 Bedroom  
2 Bath  
1,280 Sq Ft



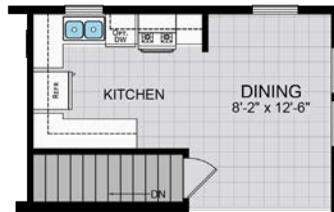
## LANCASTER OPTIONS



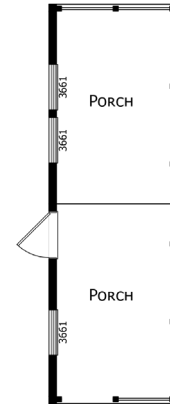
Ultimate Kitchen 2



Summit Kitchen  
Available W/ Stone  
Countertops



Stairwell

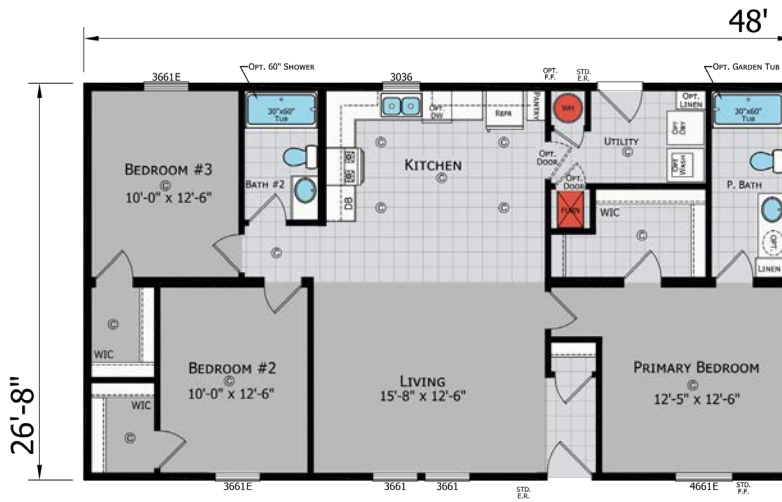


Porch

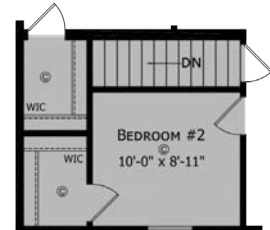
# LINCOLN

## LINCOLN 2848

3 Bedroom  
2 Bath  
1,280 Sq Ft



## LINCOLN OPTION

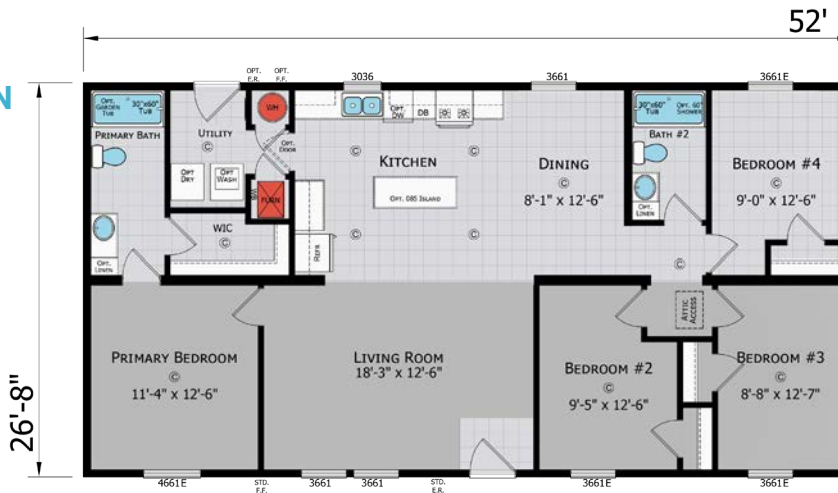


Stairwell

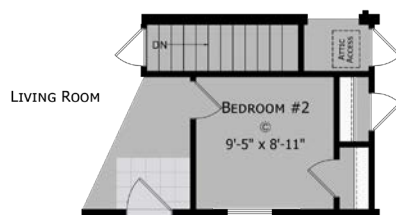
# LIVINGSTON

## LIVINGSTON 2852

4 Bedroom  
2 Bath  
1,387 Sq Ft



## LIVINGSTON OPTION



Stairwell

# MONROE

## MONROE 2848

3 Bedroom  
2 Bath  
1,280 Sq Ft



## MONROE 2844

3 Bedroom  
2 Bath  
1,173 Sq Ft



## MONROE 2840

3 Bedroom  
2 Bath  
1,067 Sq Ft



# MONROE OPTIONS



2 Bedroom



2 Bedroom W/ Stairwell



Stairwell



Rear Entry





# MYRTLE

## MYRTLE 2860

3 Bedroom  
2 Bath  
1,600 Sq Ft



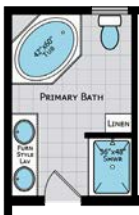
## MYRTLE OPTIONS



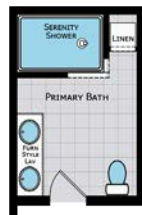
Ultimate Kitchen 2



Stairwell



Master Bath



Serenity Shower



Door Location

# ODYSSEY

## ODYSSEY 2860

3 Bedroom  
2 Bath  
1,600 Sq Ft



## ODYSSEY 2868

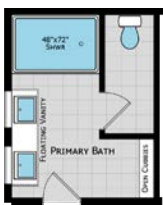
3 Bedroom  
2 Bath  
1,813 Sq Ft



# ODYSSEY OPTIONS



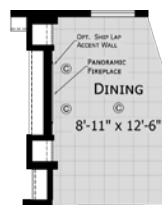
Take a  
Virtual Tour



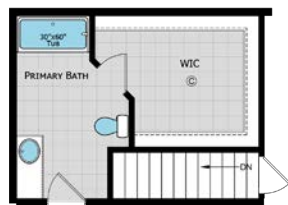
Primary Bath



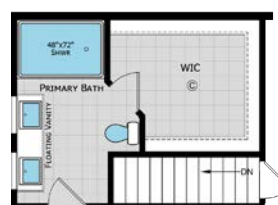
Odyssey Kitchen



Fireplace/Ent. Center



Stairwell

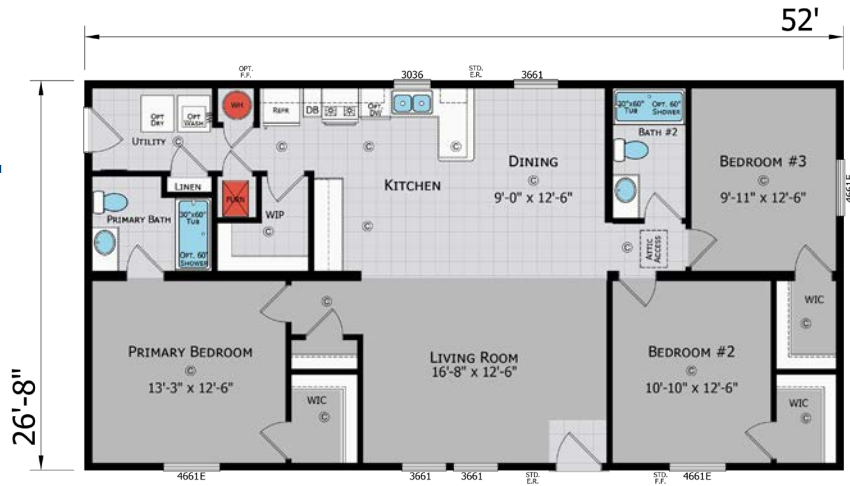


Stairwell  
W/ Primary Bath

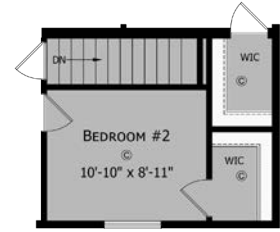
# PIERRE

## PIERRE 2852

3 Bedroom  
2 Bath  
1,387 Sq Ft



## PIERRE OPTION

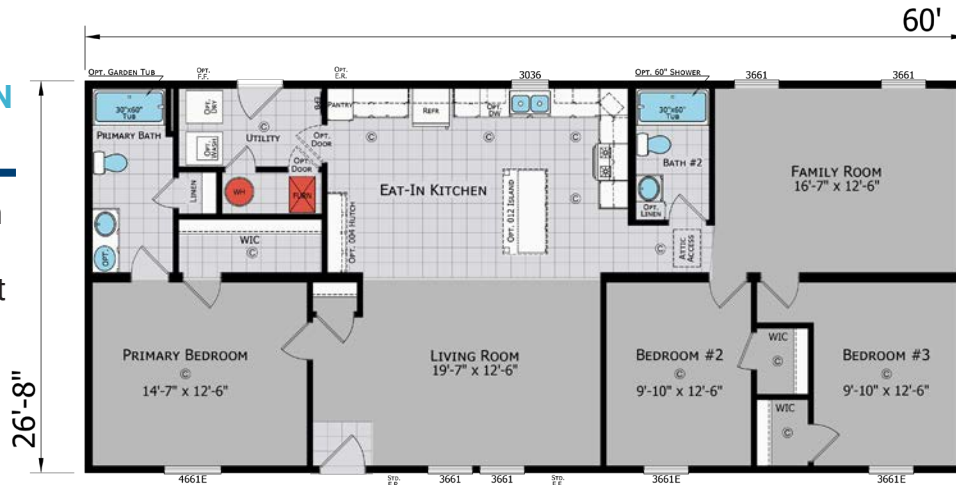


Stairwell

# SILVERTON

## SILVERTON 2860

3 Bedroom  
2 Bath  
1,600 Sq Ft

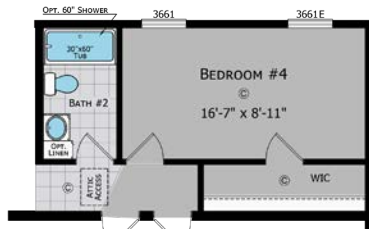


## SILVERTON 2856

3 Bedroom  
2 Bath  
1,493 Sq Ft



# SILVERTON OPTIONS



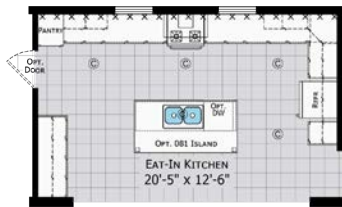
Bedroom 4



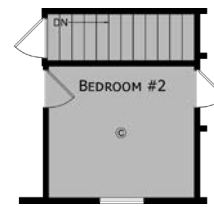
1/2 Porch



End Entry



Kitchen  
*Euro Range Hood Required*



Stairwell

# STAFFORD

## STAFFORD 2872

4 Bedroom  
2 Bath  
1,920 Sq Ft



## STAFFORD 2868

3 Bedroom  
2 Bath  
1,813 Sq Ft





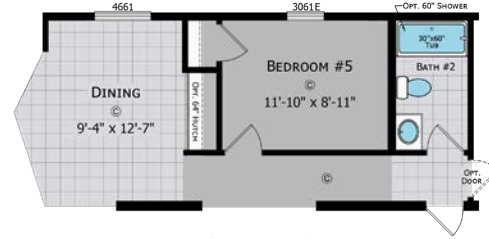
# STAFFORD OPTIONS



Ultimate Kitchen 2



Summit Kitchen  
Available W/ Stone Countertops



Bedroom 5



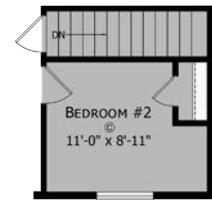
Primary Bath



Serenity Bath



Luxe Shower

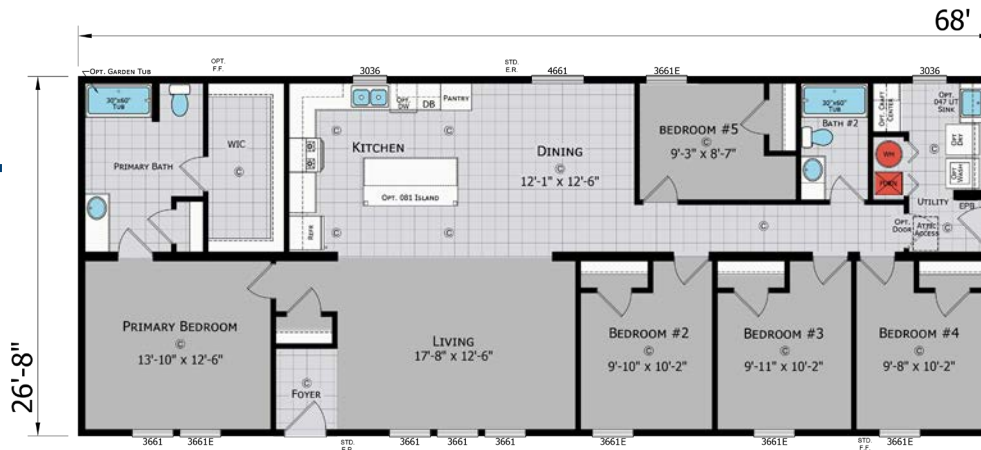


Stairwell

# SUMMIT

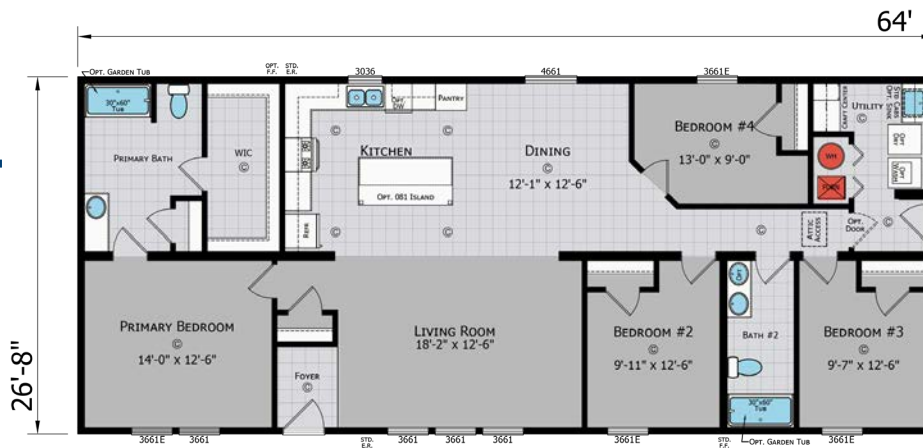
## SUMMIT 2868

5 Bedroom  
2 Bath  
1,813 Sq Ft



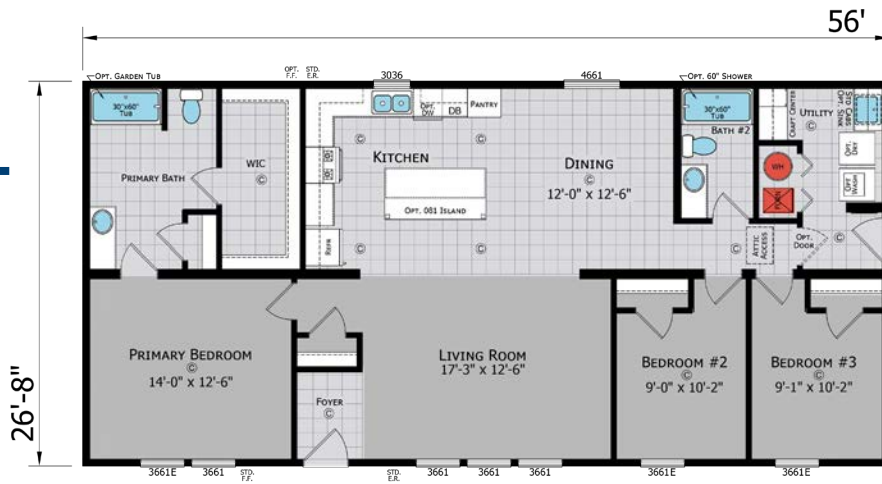
## SUMMIT 2864

4 Bedroom  
2 Bath  
1,707 Sq Ft



**SUMMIT  
2856**

3 Bedroom  
2 Bath  
1,493 Sq Ft



**SUMMIT OPTIONS**



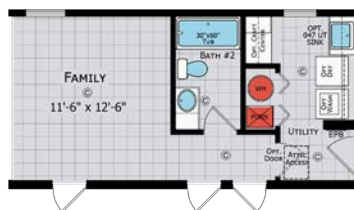
Utility Room "B"



Primary Bath



Primary Bath 2

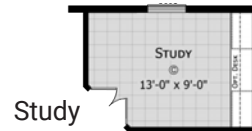


Family Room



Summit Kitchen  
Available W/ Stone Countertops

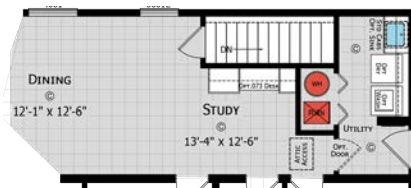
**SUMMIT 64' ONLY OPTIONS**



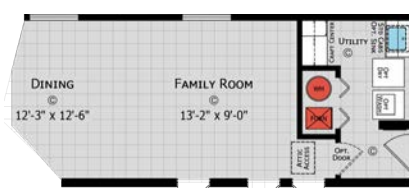
Study



Front Entry

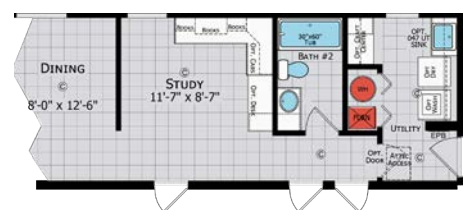


Stairwell



Family Room

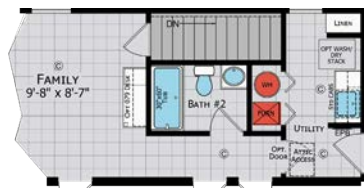
**SUMMIT 68' ONLY OPTIONS**



Study

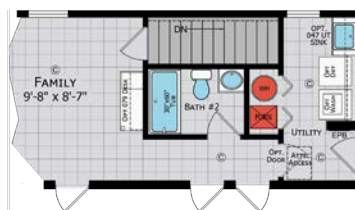


Front Entry  
N/A W/ Stairwell



Stairwell  
Bedroom 5 N/A

Stairwell W/  
Utility Room "B"  
Bedroom 5 N/A



Jack & Jill Bath

# VENTURA

## VENTURA 2856

3 Bedroom  
2 Bath  
1,493 Sq Ft

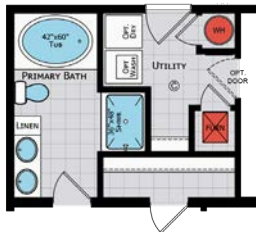


## VENTURA 2852

3 Bedroom  
2 Bath  
1,387 Sq Ft



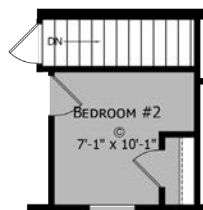
## VENTURA OPTIONS



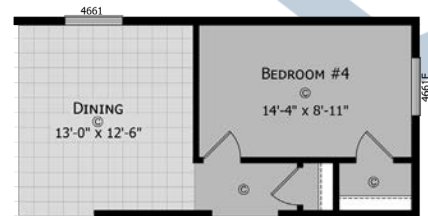
Glamour Bath



End Entry



Stairwell



Bedroom 4

# WARREN

28' WIDES

## WARREN 2860

3 Bedroom  
2 Bath  
1,600 Sq Ft



## WARREN 2856

3 Bedroom  
2 Bath  
1,493 Sq Ft



# WARREN OPTIONS



Primary Bath



Serenity Bath



Ultimate Kitchen 2



Stairwell



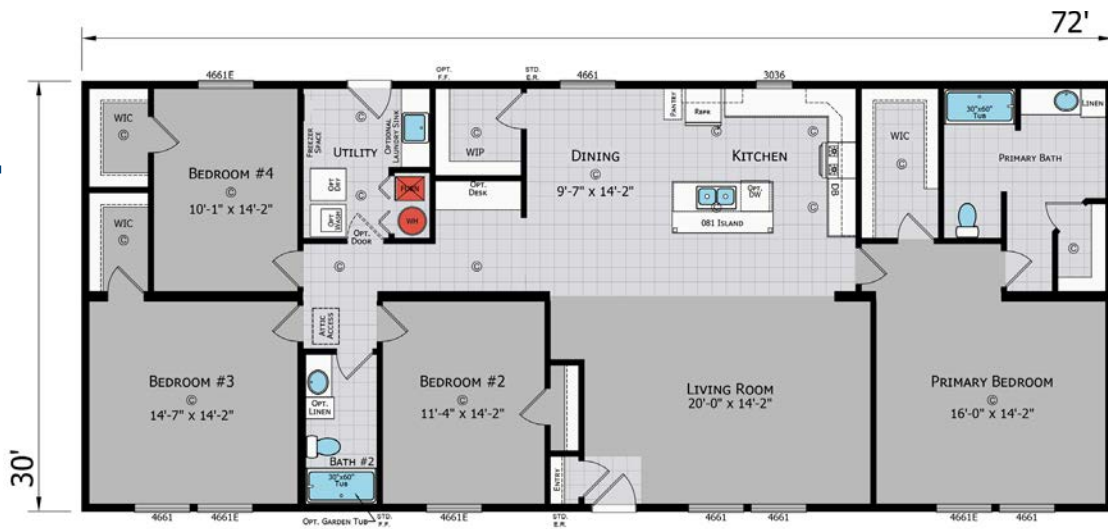
# 30' WIDES



# APOLLO

## APOLLO 3272

4 Bedroom  
2 Bath  
2,160 Sq Ft



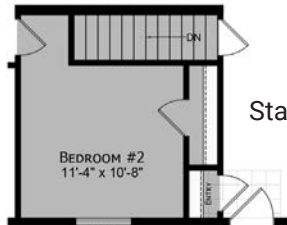
# APOLLO OPTIONS



Entertainment Center



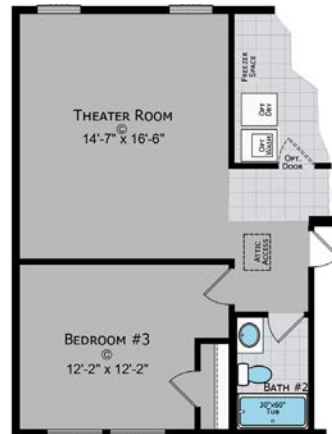
End Entry  
NA W/ Theater  
Room/Butler's  
Pantry



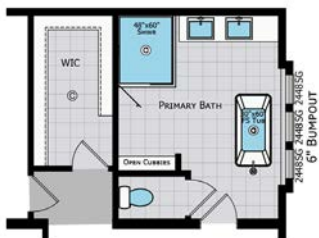
Stairwell



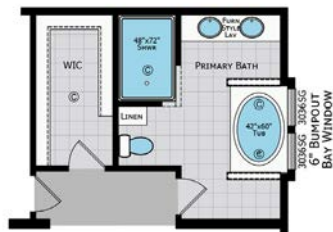
Ultimate Kitchen 2



Theater Room



Radiant Spa Bath



Serenity Bath



Primary Bath



Closet Organizer

# FENTON

30' WIDES

## FENTON 3260

3 Bedroom  
2 Bath  
1,800 Sq Ft



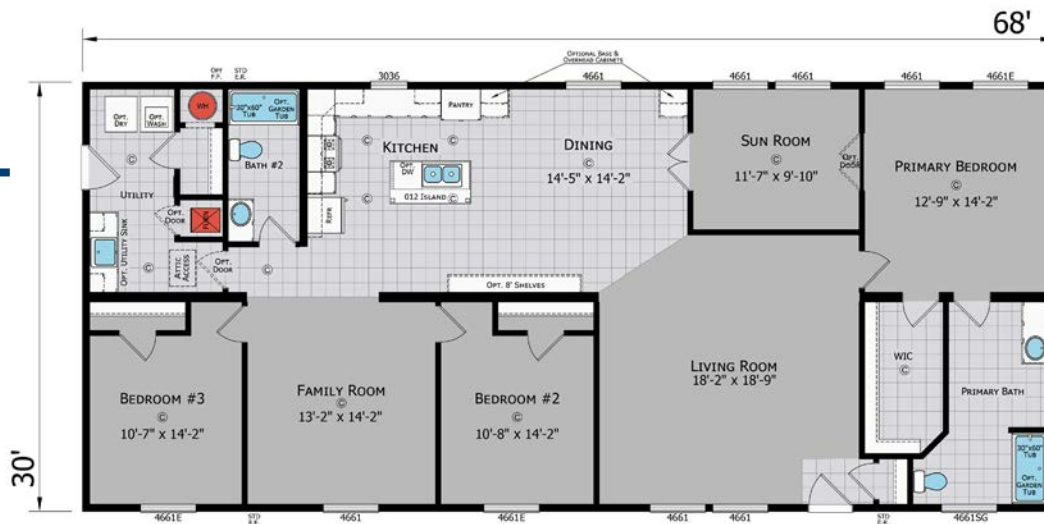
## FENTON 3264

3 Bedroom  
2 Bath  
1,920 Sq Ft



## FENTON 3268

3 Bedroom  
2 Bath  
2,040 Sq Ft

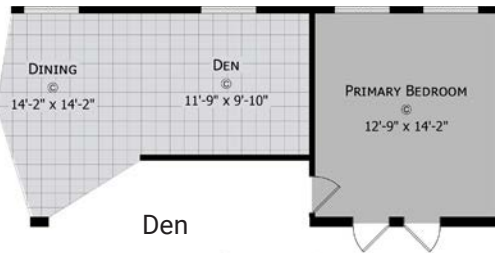




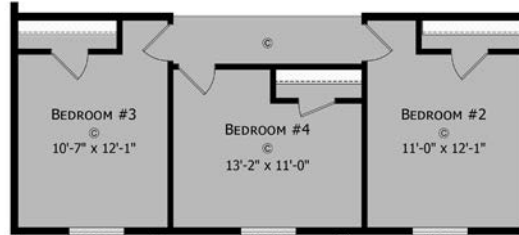
# FENTON OPTIONS



Radiant Spa Bath  
No Sunroom



Den



4th Bedroom



Serenity Bath 1  
No Sunroom



Ultimate Kitchen 2



Stairwell  
No Furnace  
or W/H included



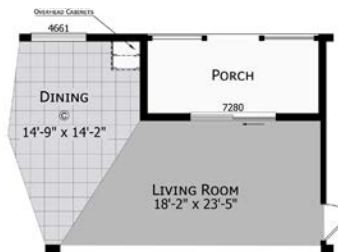
Primary Bath 3  
No Sunroom



Primary Bath 1



Serenity Bath 2



Porch



Electric Fireplace  
& Hutch  
with Primary Bath 3,  
Serenity Bath 1  
or Radiant Spa

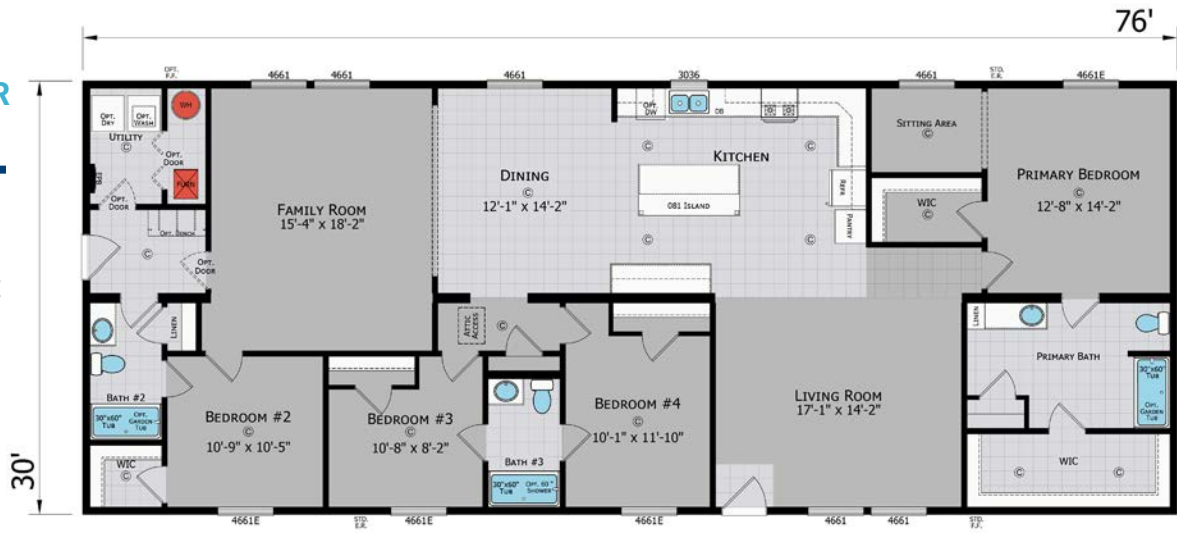


# RED CEDAR

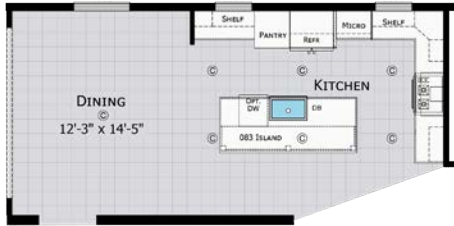
30' WIDES

## RED CEDAR 3276

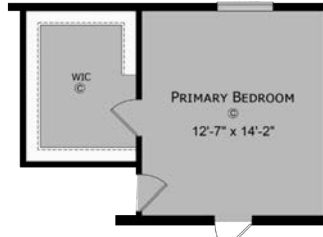
4 Bedroom  
3 Bath  
2,280 Sq Ft



## RED CEDAR OPTIONS



Ultimate Kitchen 2



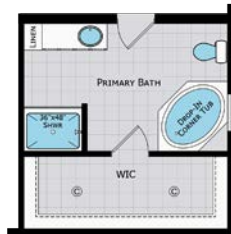
Walk in Wardrobe



Utility Sink



Serenity Bath



Primary Bath



Radiant Spa



Stairwell



# SHELBY OPTIONS

30' WIDES



End Entry



Dining Room



Ultimate Kitchen 2



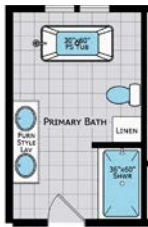
Bedroom 4



Bedroom 5



Stairwell  
NA W/ 4th Bedroom



Master Bath



Serenity Bath



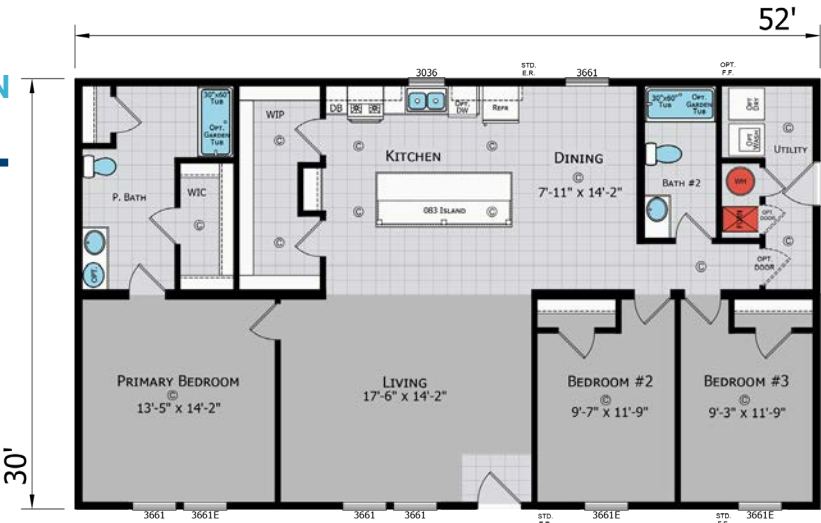
Take a  
Virtual Tour



# THORNTON

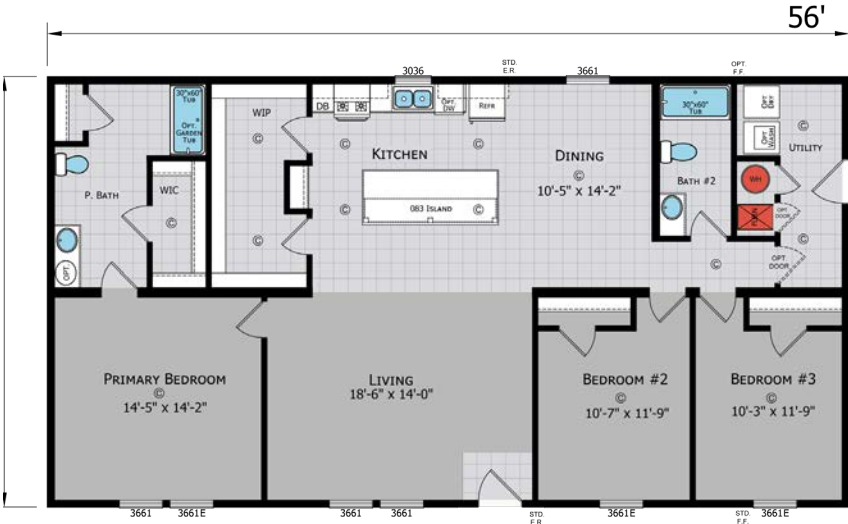
## THORNTON 3252

3 Bedroom  
2 Bath  
1,560 Sq Ft

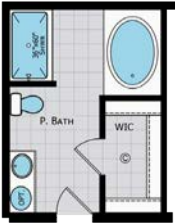


## THORNTON 3256

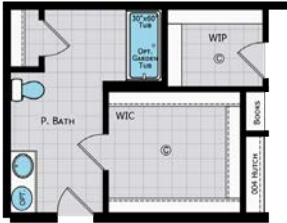
3 Bedroom  
2 Bath  
1,680 Sq Ft



# THORNTON OPTIONS



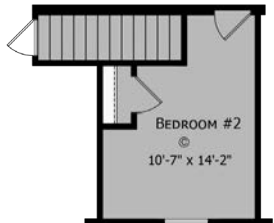
Bath 1



Bath 2



Serenity Bath



Stairwell

# WINSTON

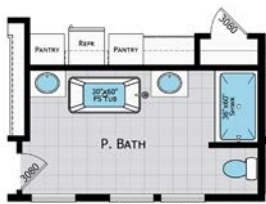
30' WIDES

## WINSTON 3272

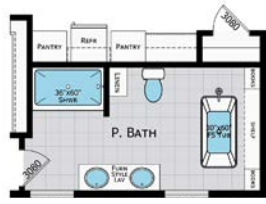
3 Bedroom  
2 Bath  
2,160 Sq Ft



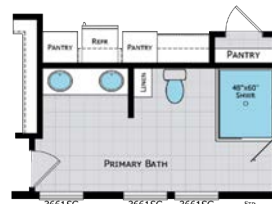
## WINSTON OPTIONS



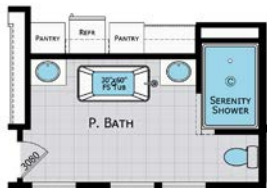
Primary Bath



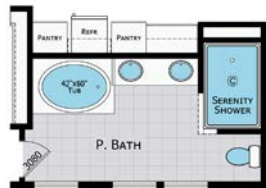
Primary Bath 2



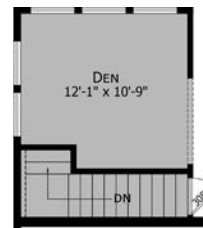
Primary Bath 3



Serenity Bath



Serenity Bath 2



Stairwell



Take a  
Virtual Tour



# STANDARD

## FEATURES



All Redman Homes are Standard with a 7 Year warranty

### STRUCTURAL

2 x 10 Floor Joists 16" O.C. \*\*  
Returnable Modular Carrier  
2 x 6 Exterior Sidewalls - 16" OC \*\*  
2 x 4 24" O.C. Interior Walls \*\*  
R-40 Roof Insulation \*\*  
R-19 Sidewall Insulation \*\*  
5/8" OSB T&G Floor Decking  
7/16" OSB Roof Sheathing  
Water Resistant Roof Underlayment

### INTERIOR FINISH

8' Flat Ceiling \*\*  
Stomp Textured Ceilings  
Drywall T/O (required option)  
Smooth Finish w/ Standard Primer \*\*  
Finished Ceiling Joints Except Closets \*\*  
13 oz. Carpet  
Tack Strip  
5lb Rebond Carpet Pad  
Linoleum - Choice of Color  
Entry Foyer at Front Door  
Wire Shelving in Closets  
Flat Wrapped Door Casing  
Wrapped Door Jambs  
Wrapped Window Jambs  
Wrapped Shoe Base Trim  
Wrapped Flat Panel Cabinets  
Wrapped Cabinet Stiles  
Concealed Cabinet Door Hinges  
Formica Countertops - Choice of Color  
Self Edge Countertops

### EXTERIOR

8' Sidewall \*\*  
(28' Wide) Nominal 3/12 Roof Pitch \*\*  
(30' Wide) 5/12 Roof Required  
25 Year 3-Tab Shingles (3/12 roof pitch)  
30 Year Architectural Shingles  
(5/12 & 7/12 roof pitch)  
OSB Wrap \*\*  
Weather Wrap \*\*  
Double 4 Dutch Lap Vinyl Siding  
Aluminum Fascia / Vinyl Soffit  
Vented Eaves All Around  
Black Torch Light - Exterior Doors

### KITCHEN / BATHROOMS

Black Standard Electric Range  
Black 30" Range Hood  
Black 18 CF Over/Under Refrigerator  
Wrapped Shaker Cabinets  
Wrapped Cabinet Stiles  
Corner O/H Kitchen Cabinet (VBP)  
30" Lined O/H Cabs w/ Fixed Shelves  
Shelf Over Refrigerator  
Center Shelves in Base (Kitchen VBP)  
Single Bank of Drawers - Kitchen  
Extendable Deluxe Drawer Guides  
Stainless Steel Kitchen Sink  
60" One Piece Fiberglass Tub/Shower  
Single Bank of Drawers - Baths - VBP  
Round Commode  
China Vanity Sinks  
Metal Faucets T/O  
30" Bath Lavs (VBP)  
Beveled Bathroom Mirrors  
Lighted Bath Fans

## WINDOWS & DOORS

6 Panel Residential Front Door (no storm)  
36" x 80" Fire Rated Rear Door \*\*  
Dead Bolt Locks on Exterior doors  
Low "E" Vinyl Gridded Windows  
2 Panel White Raised Panel Interior Doors  
2-Mortised Hinges at Interior Doors  
Black Hinges & Interior Door Knobs  
Door Stop

## HEATING / PLUMBING / ELECTRICAL

Electric Furnace  
Cold Air Returns In Ceiling \*\*  
Fiberglass Heat Ducts - Shipped Loose\*\*  
Toekick Baseboard Registers \*\*

## KITCHEN AND BATHS

Perimeter Drop-In Registers \*\*  
200 AMP Service With 30/40 Panel \*\*  
(2) Exterior Recept \*\*  
12-2 Copper Wiring  
Wire for Electric Dryer  
TV/Ph Jack In Kitchen  
Plumb for Washer  
PEX Water Lines  
Schedule 40 PVC Drain & Vent Lines \*\*  
30 Gallon Electric Water Heater  
(1) Frost Free Exterior Faucet  
Water Shut-Offs T/O  
Can Lights T/O Per Print  
3-Bulb Strip Lights @ Bath Lavs  
Programmable Thermostat  
Extra Conduit Drop

*\*\* Modular Conversion Package*



7 YEAR WARRANTY



Due to continuous product development and improvement, prices, specifications and material are subject to change without notice or obligation. Square footage and other dimensions are approximate. Included images are artist renderings and are not intended to be an accurate representation of the homes. Renderings and Floor Plans may be shown with optional features and/or third party additions that may not be available in all regions or situations. Exterior Renderings may include onsite builder built options not offered by Champion Home Builders, Inc.

Our purpose  
is to champion  
our customers'  
home experience  
every step of  
the way.



REDMAN  HOMES®

A Smarter Way to Build®



308 Sheridan Drive • PO Box 95 • Topeka, IN 46571  
[www.championhomes.com](http://www.championhomes.com)



Due to continuous product development and improvement,  
specifications and materials are subject to change without notice or obligation.  
Exterior images may be artist renderings and are not intended to be an  
accurate representation of the home. Renderings and photos may be shown  
with optional features or third party additions.