



**M**  
**LANDMARK** *Essence*

COMMODORE HOMES INDIANA

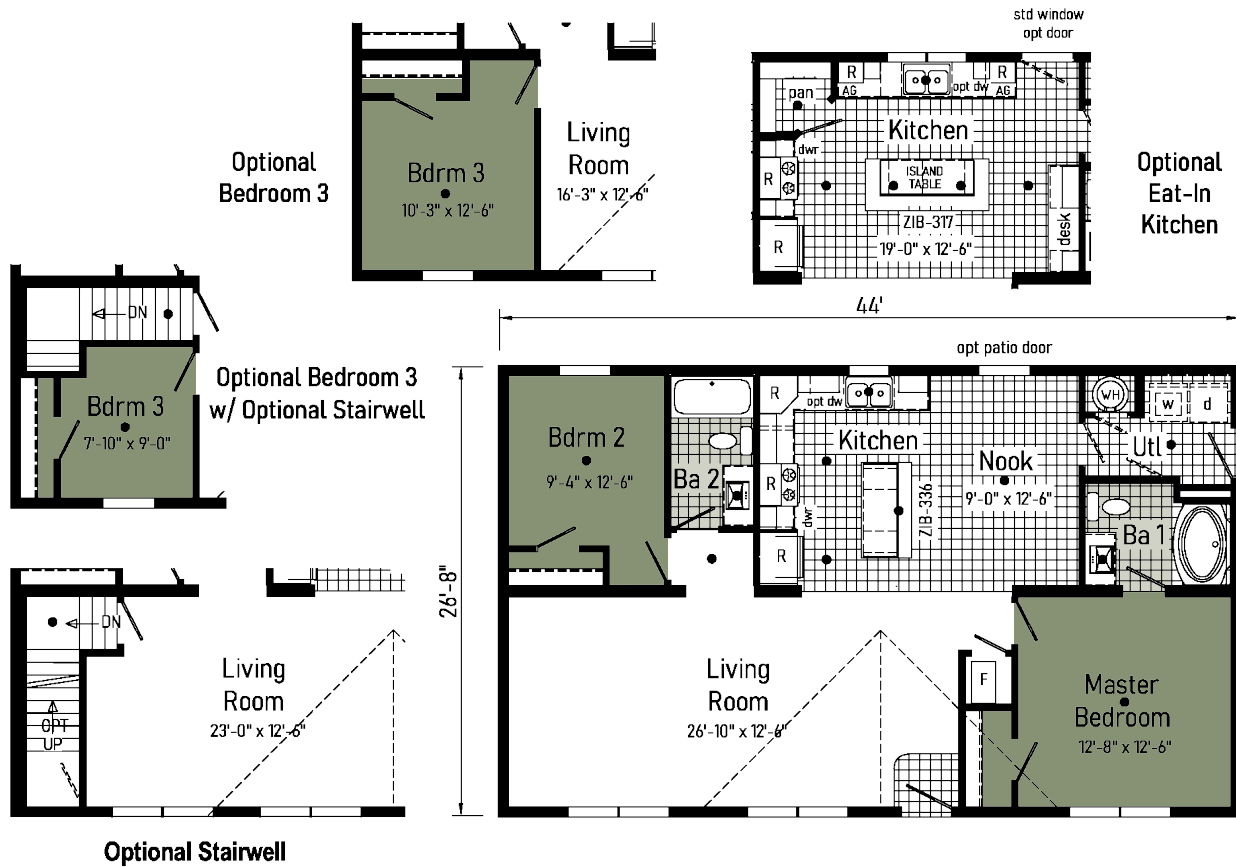


# 9L28442A

(2NM2433-P)

2844 | 1173 Sq. Ft.

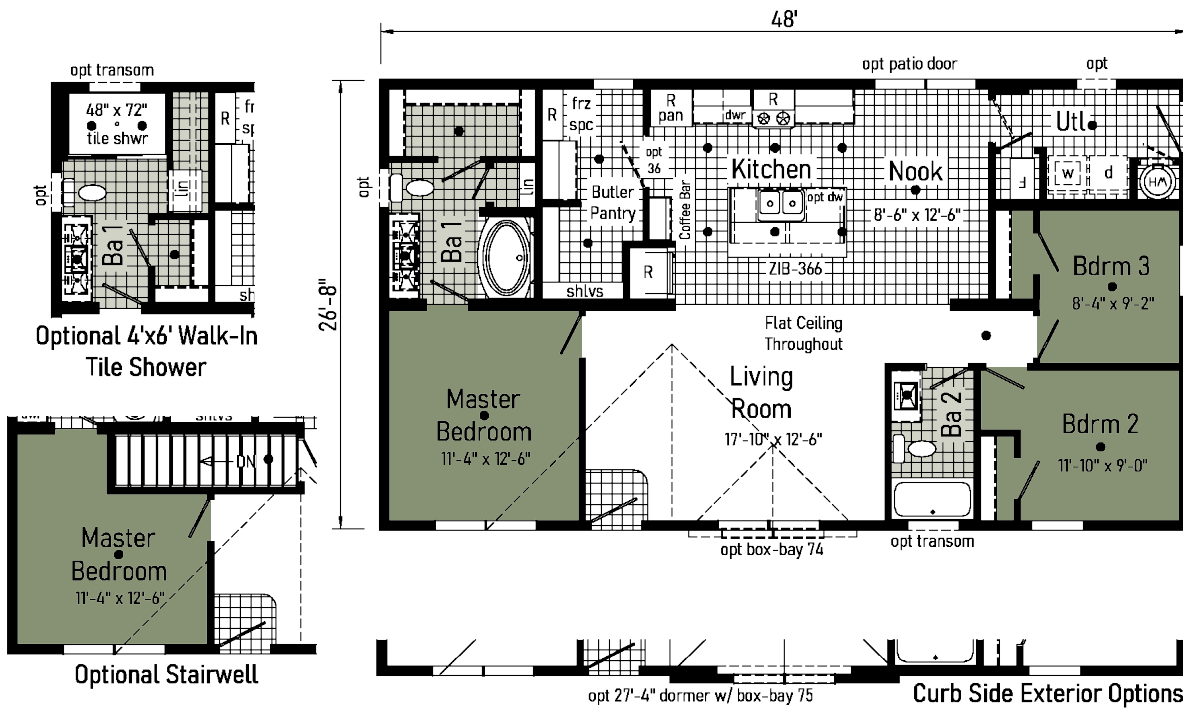
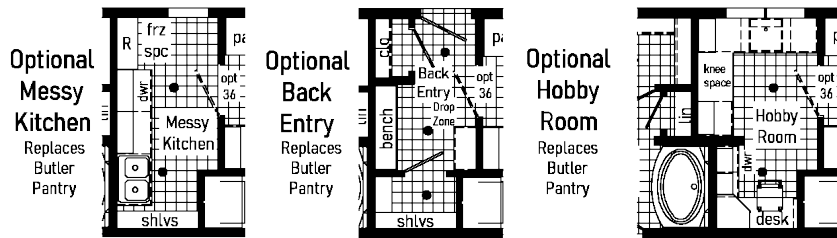
# Essence 9



**9L28483A**  
(2NM2430-P)

2848 | 1280 Sq. Ft.

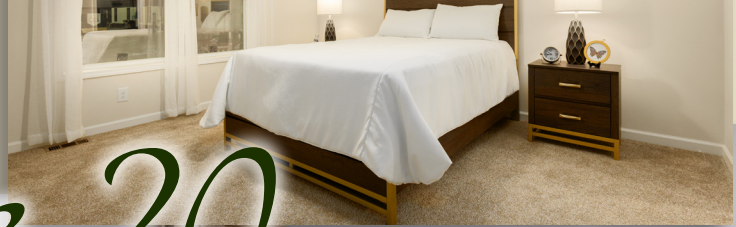
# Essence 14



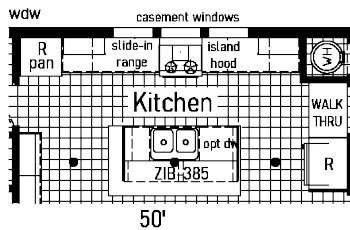


**9L28503B**  
(2NM2434-P)

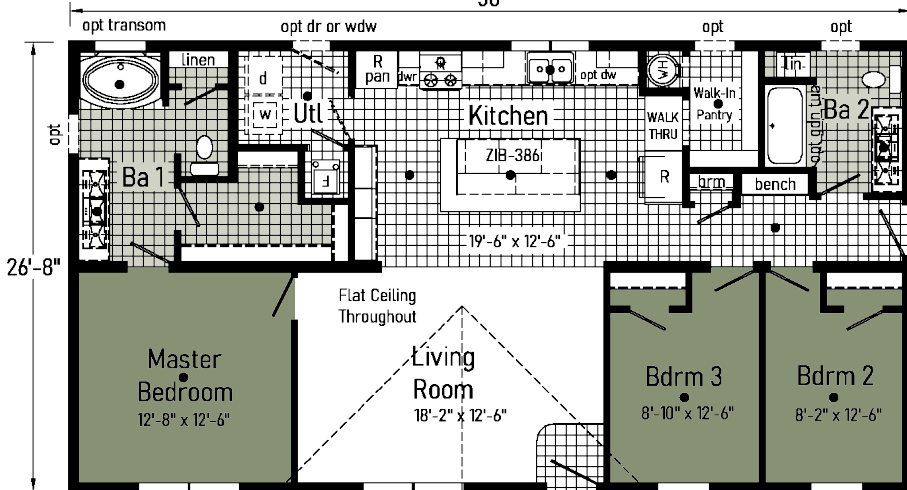
2850 | 1333 Sq. Ft.



# Essence 20



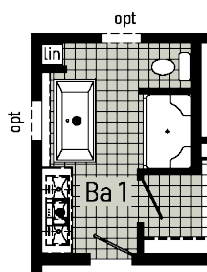
**Optional Slide-In Range, Island Hood and Casement Windows**  
Moves sink to island.



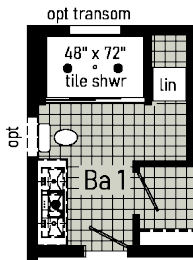
**Scan to View Model!**



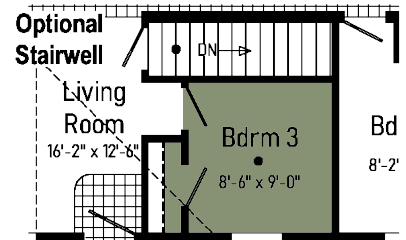
Optional Garage



**Optional Freestanding Tub with Shower**



**Optional 4'x6' Walk-In Tile Shower**

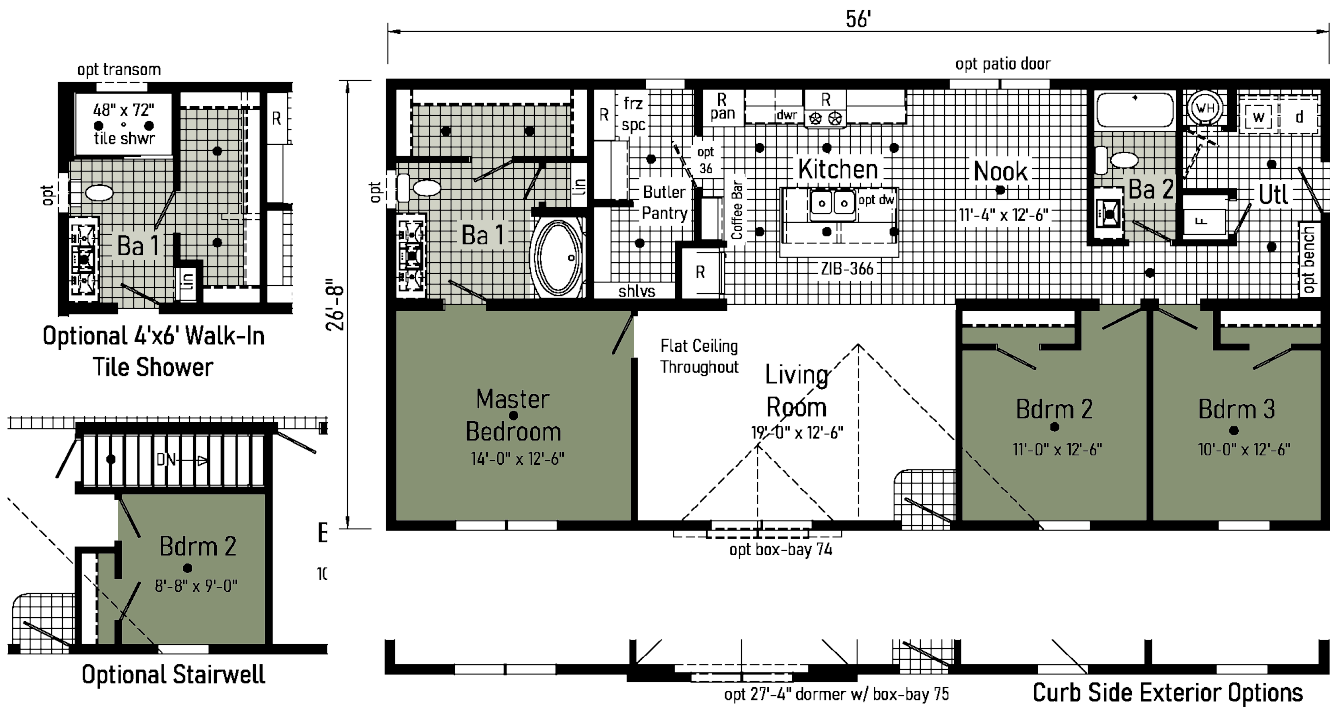
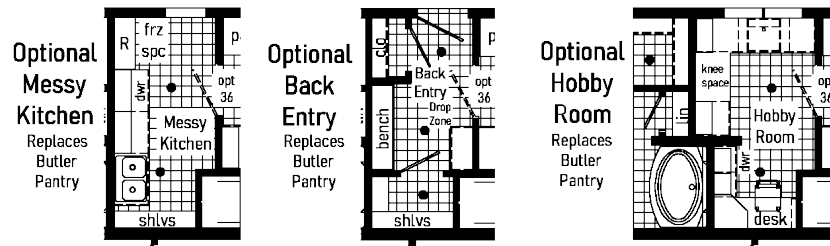




**9L28563B**  
(2NM2432-P)

2856 | 1493 Sq. Ft.

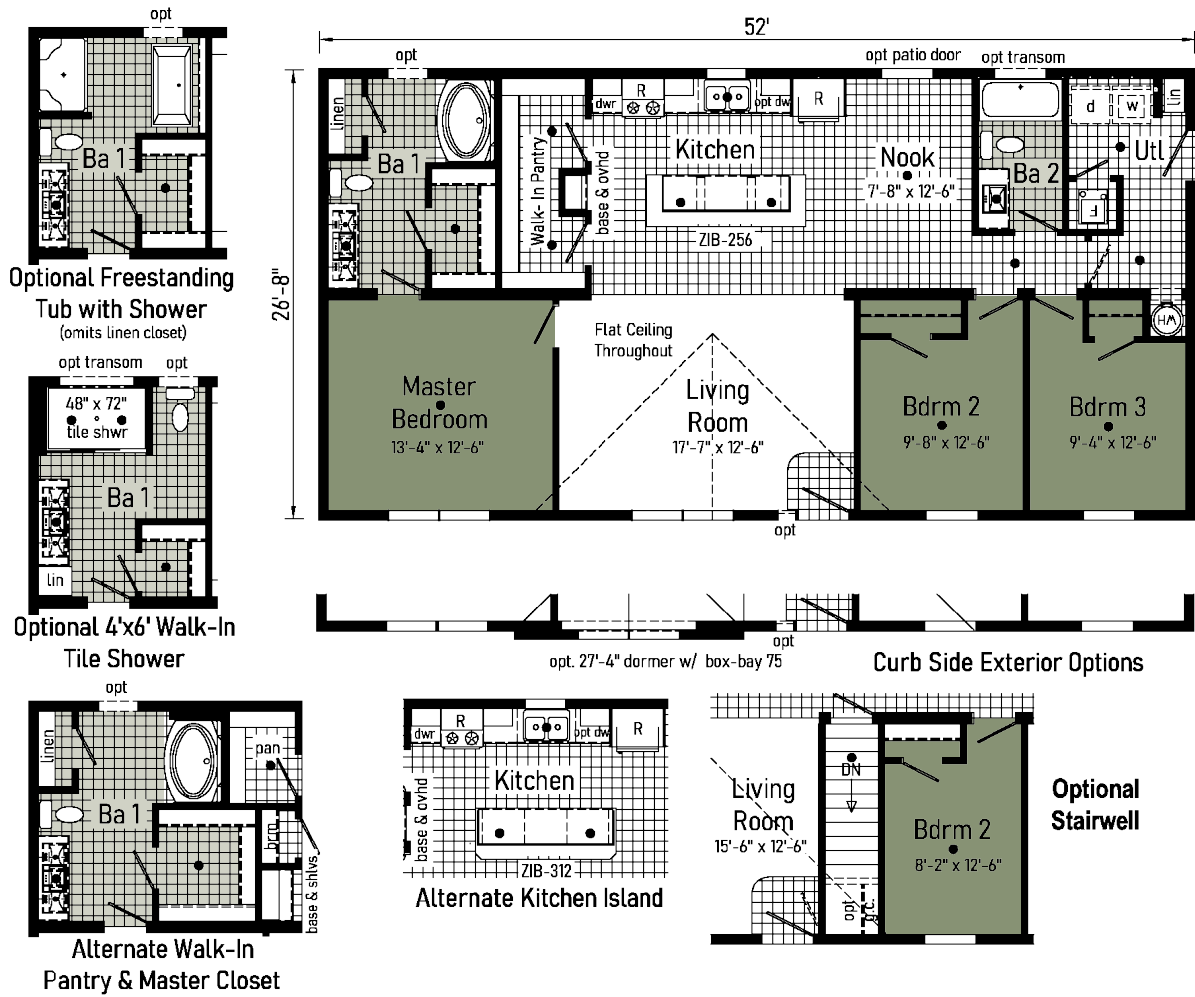
# Essence 16



**9L28523F**  
(2NM2401-P)

2852 | 1387 Sq. Ft.

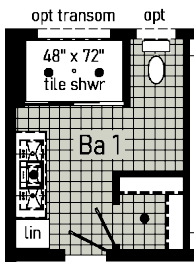
# Essence 1



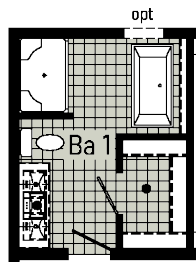
# 9L28603D (2NM2402-P)

2860 | 1600 Sq. Ft.

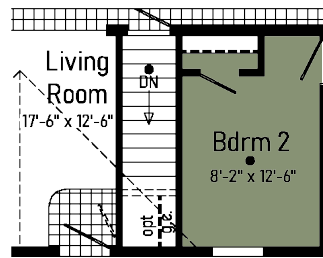
## Essence 2



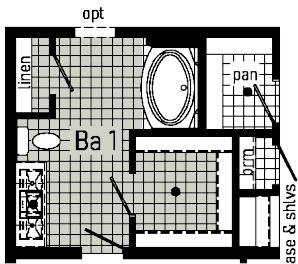
Optional  
4' x 6' Walk-In  
Tile Shower



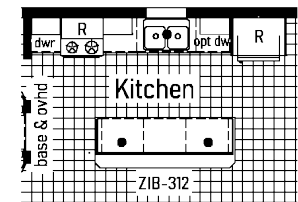
Optional  
Freestanding Tub  
with Shower  
(omits lin)



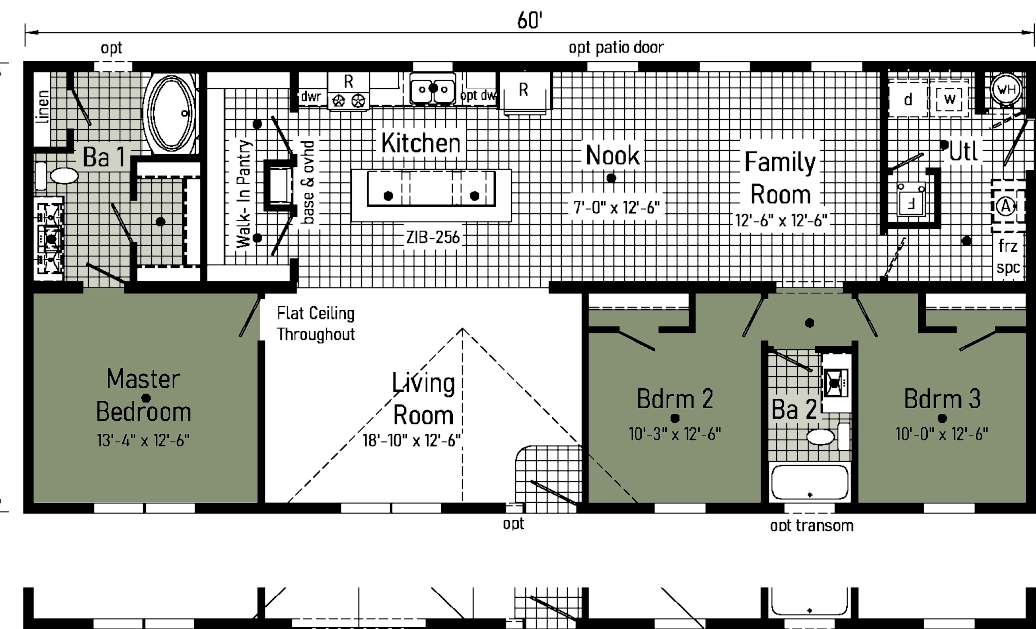
Optional  
Stairwell



Alternate Walk-In  
Pantry & Master Closet



Alternate Kitchen Island



Curb Side Exterior Options

opt. 27'-4" dormer w/ box-bay-75

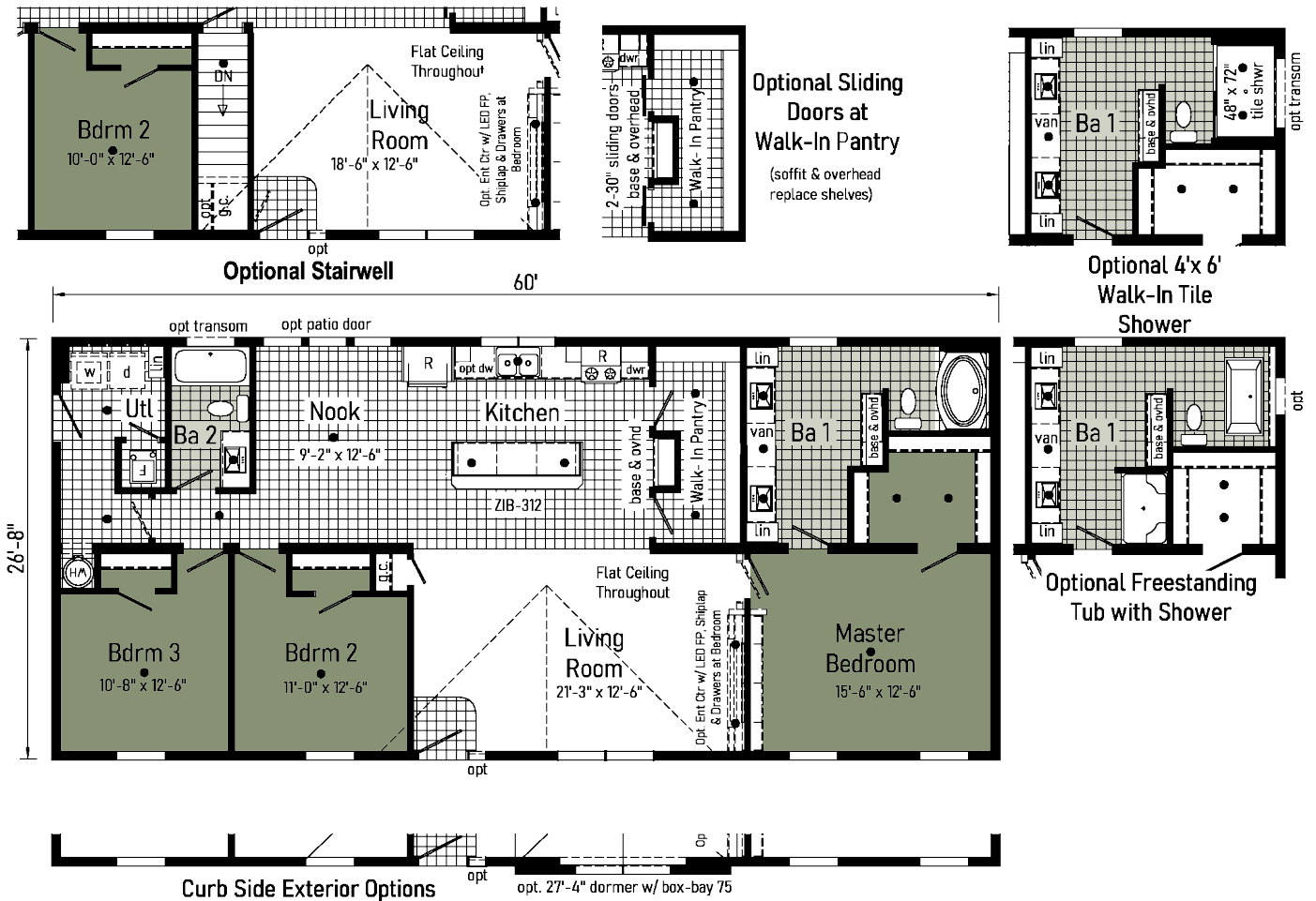
opt transom



**9L28603E**  
(2NM2403-P)

2860 | 1600 Sq. Ft.

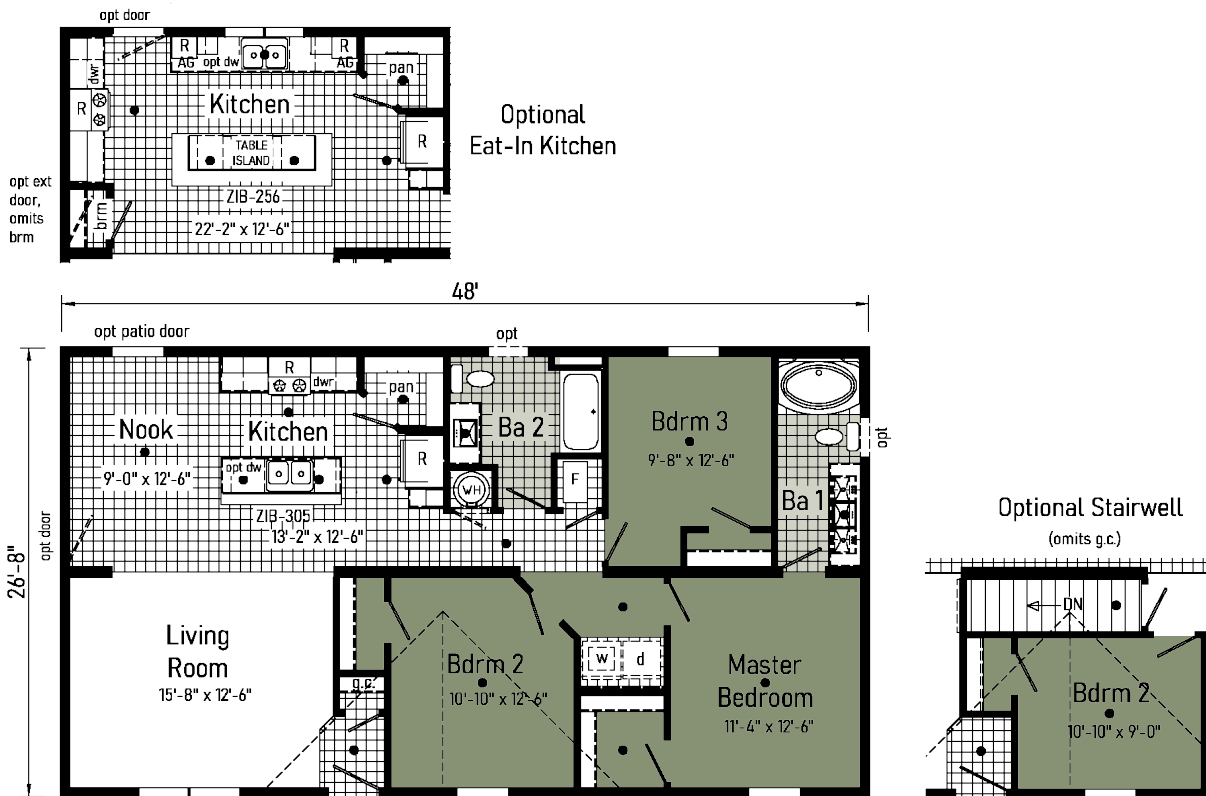
# Essence 3



**9L28483E**  
(2NM2420-P)

2848 | 1280 Sq. Ft.

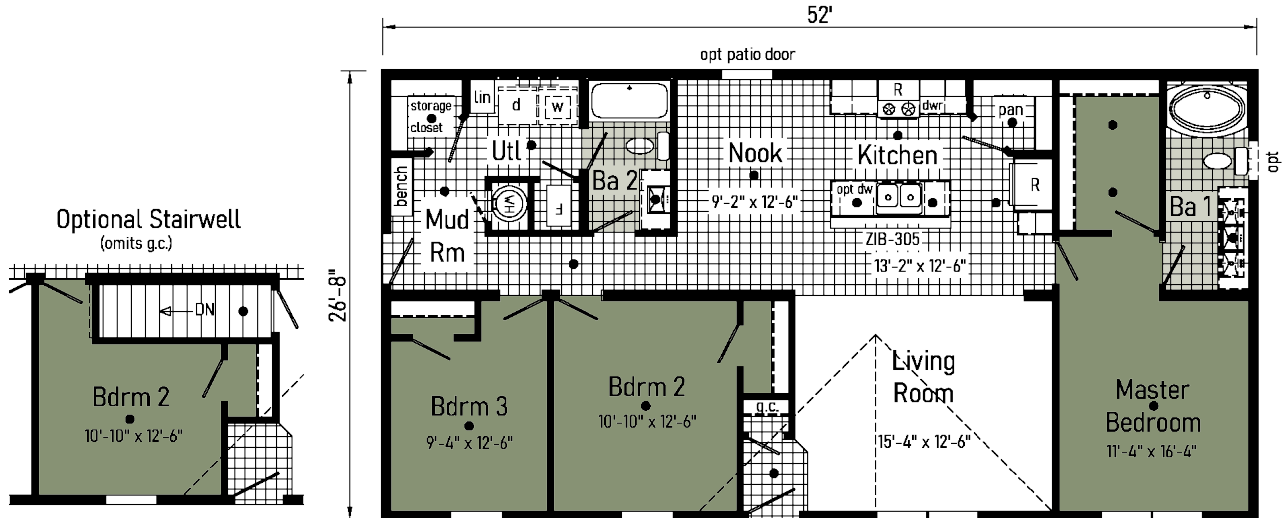
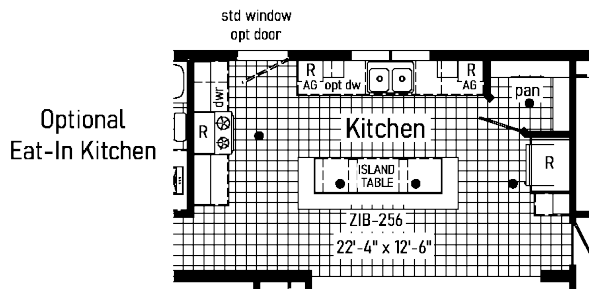
# Essence 10



**9L28523A**  
(2NM2421-V)

2852 | 1387 Sq. Ft.

# Essence 11



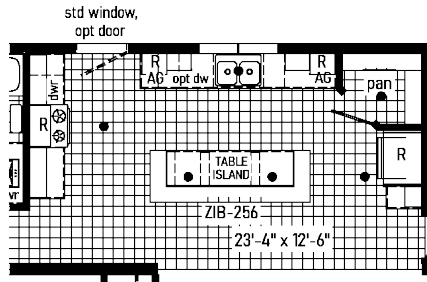
# 9L28563A

(2NM2422-P)

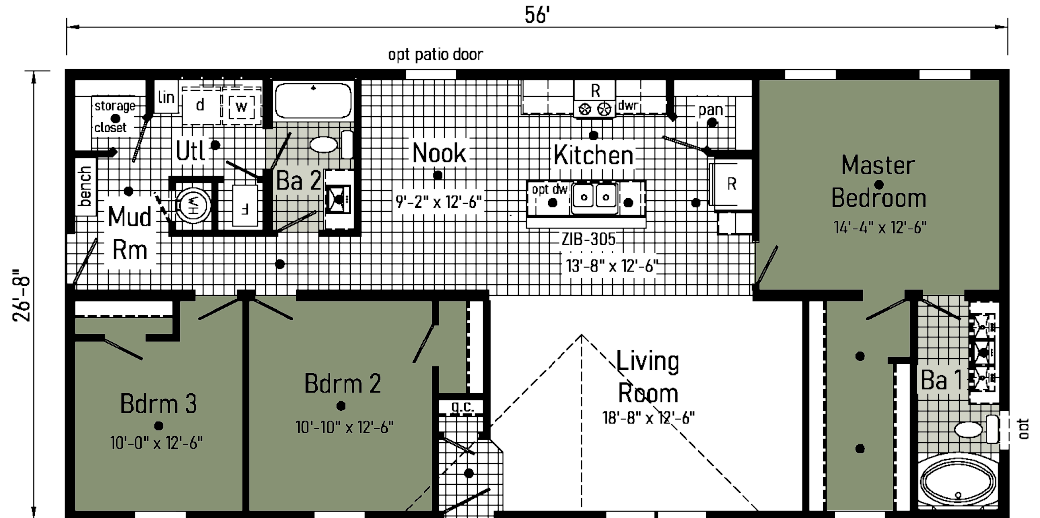
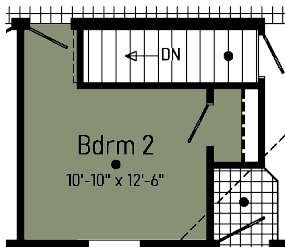
2856 | 1493 Sq. Ft.

# Essence 12

Optional  
Eat-In Kitchen



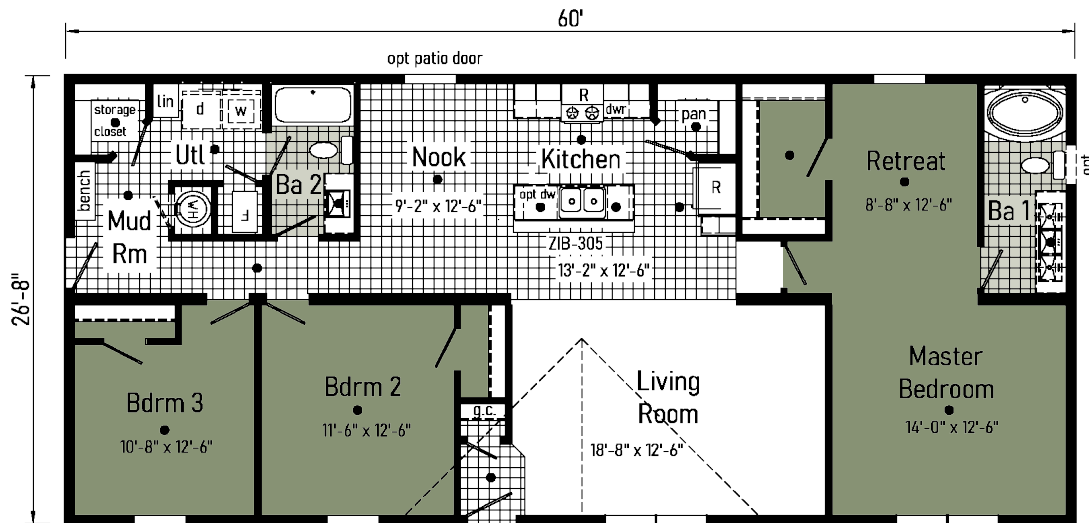
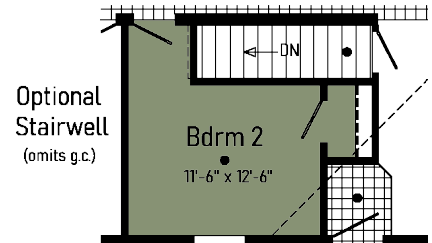
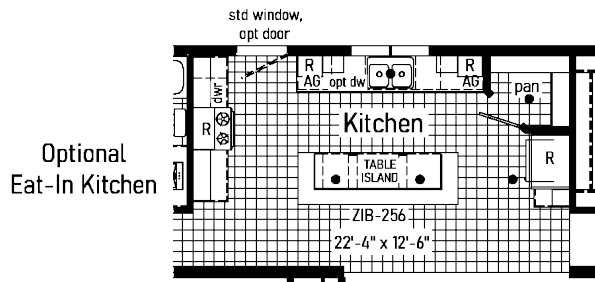
Optional Stairwell  
(omits g.c.)



**9L28603A**  
(2NM2423-P)

2860 | 1600 Sq. Ft.

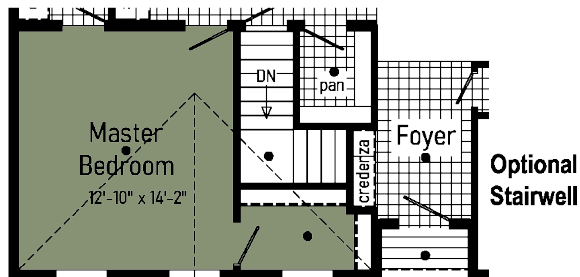
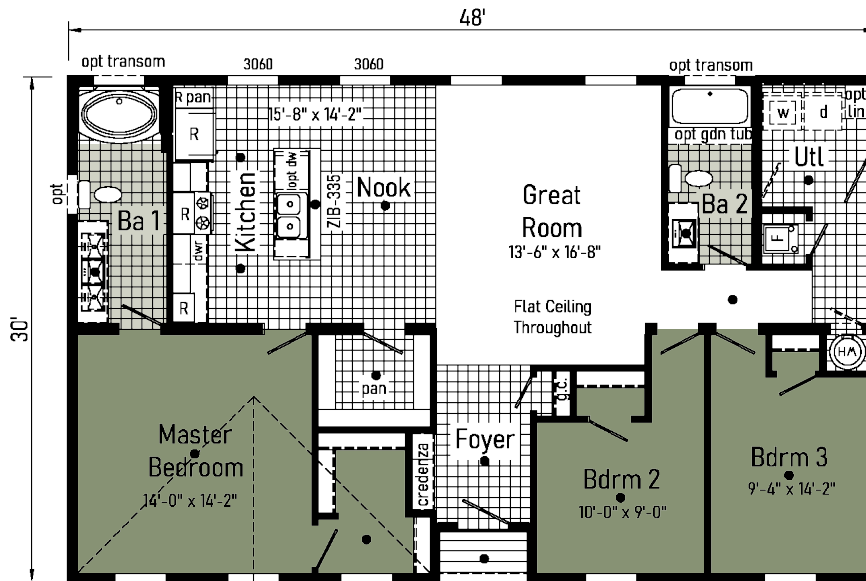
# Essence 13



**9L32483A**  
(2NM2404-V)

3248 | 1424 Sq. Ft.

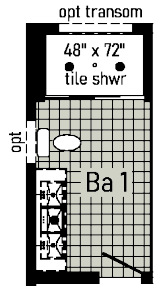
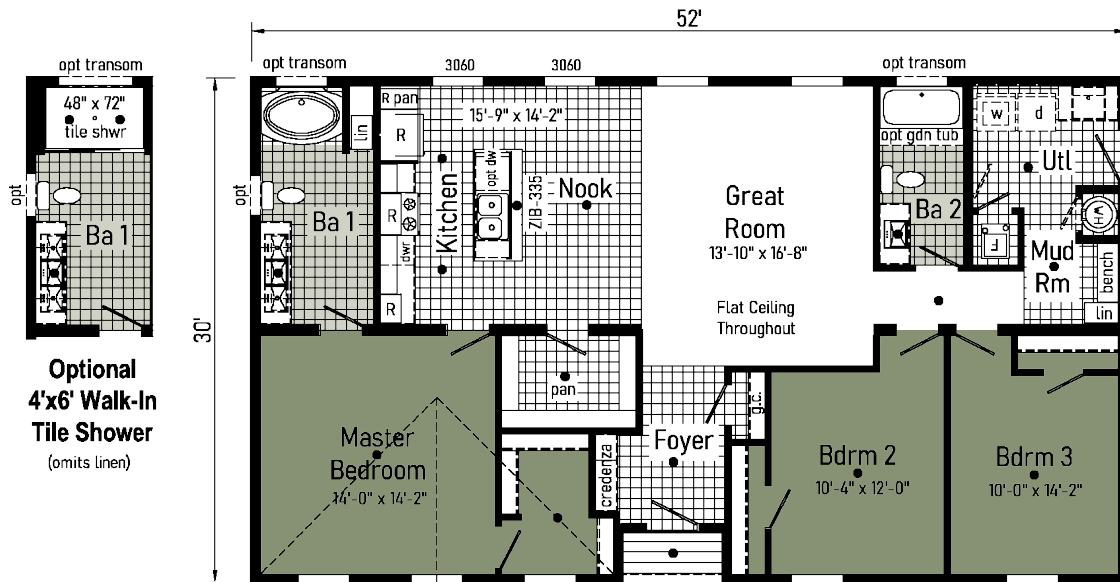
# Essence 4



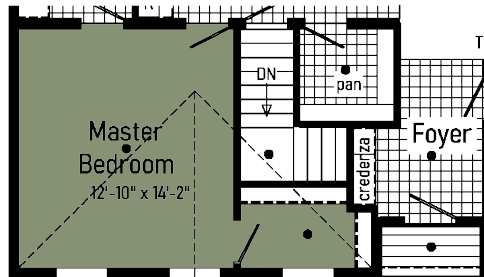
**9L32523A**  
(2NM2405-V)

3252 | 1542 Sq. Ft.

# Essence 5



**Optional  
4'x6' Walk-In  
Tile Shower**  
(omits linen)



**Optional  
Stairwell**



**9L32563C**  
(2NM2406-V)

3256 | 1662 Sq. Ft.

# Essence 6





**9L32603G**  
(2NM2407-V)

3260 | 1781 Sq. Ft.

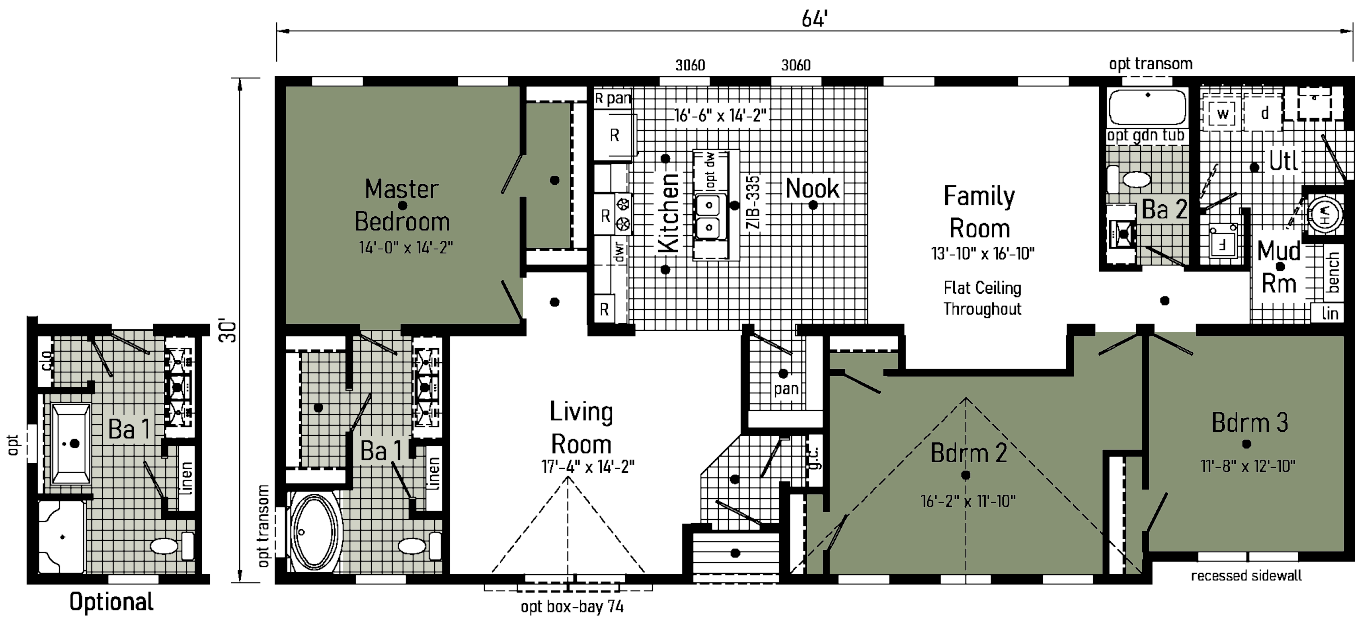
# Essence 7



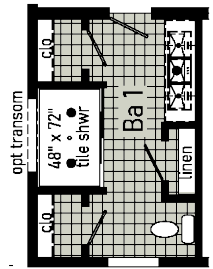
**9L32643C**  
(2NM2408-V)

3264 | 1888 Sq. Ft.

# Essence 8

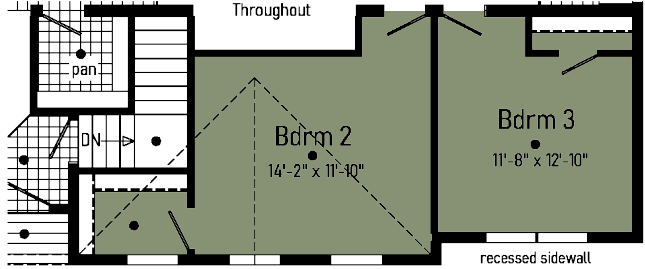


**Optional Freestanding Tub with Shower**



**Optional 4'x6' Walk-In Tile Shower**

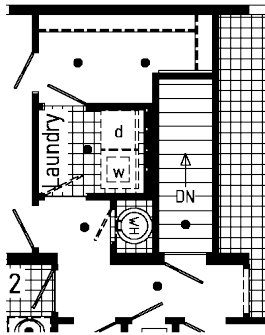
**Optional Stairwell**  
(omits g.c.)



**9L32563A**  
(2NM2424-V)

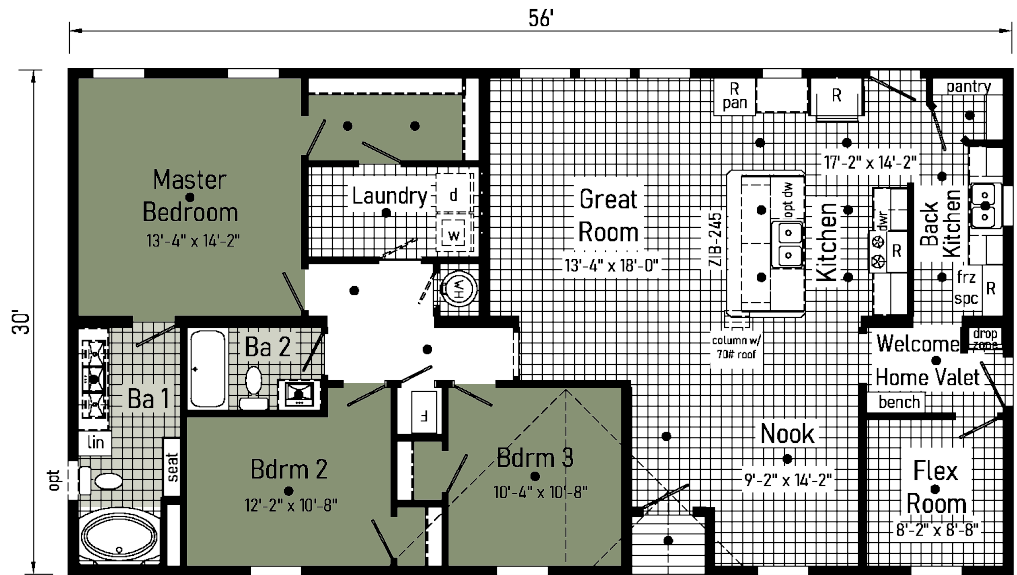
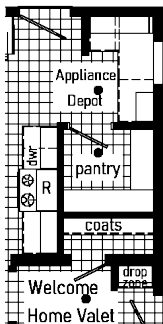
3256 | 1664 Sq. Ft.

# Essence 17



**Optional Stairwell**

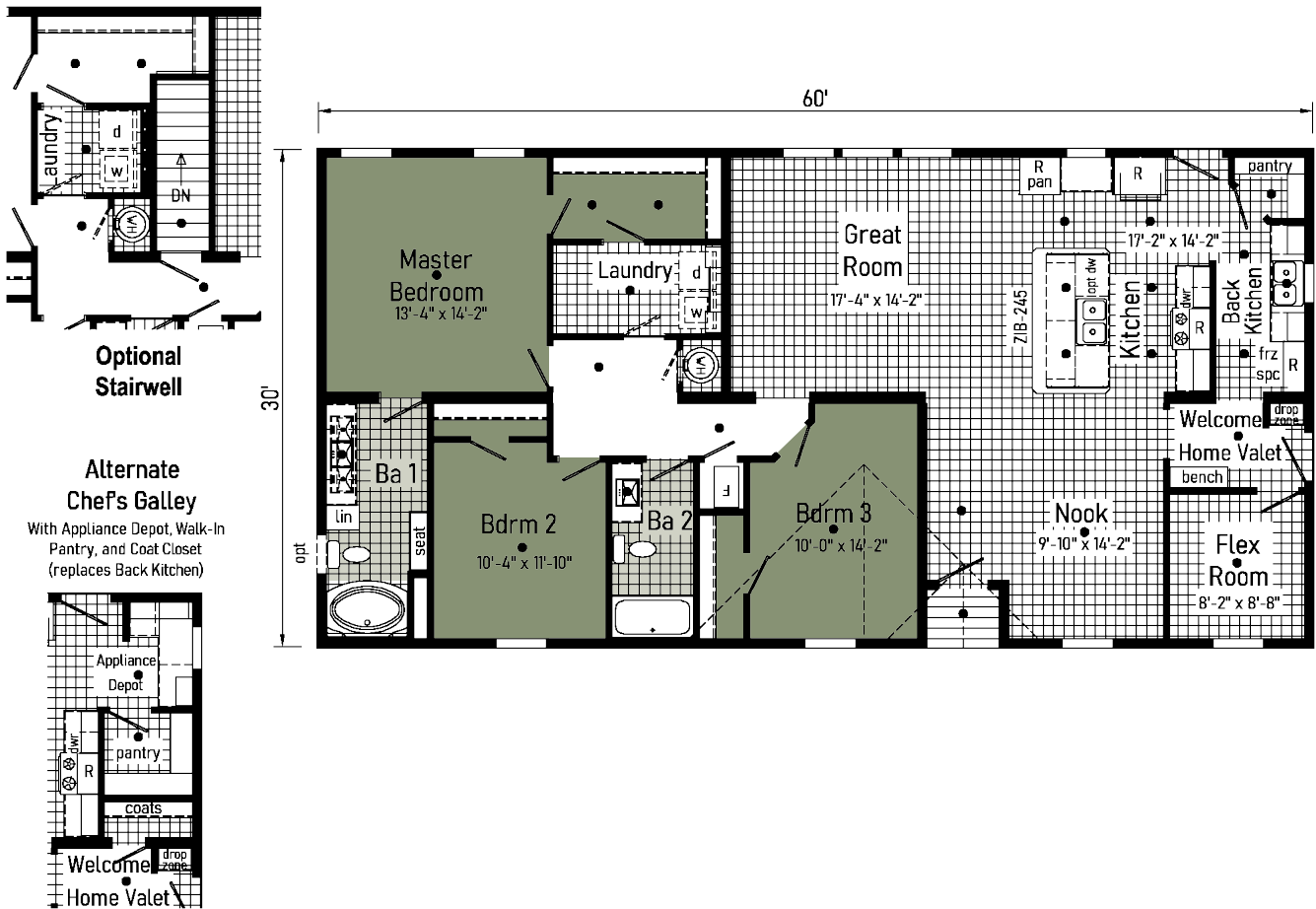
**Alternate Chef's Galley**  
With Appliance Depot, Walk-In Pantry and Coat Closet (replaces Back Kitchen)



**9L32603A**  
(2NM2425-V)

3260 | 1784 Sq. Ft.

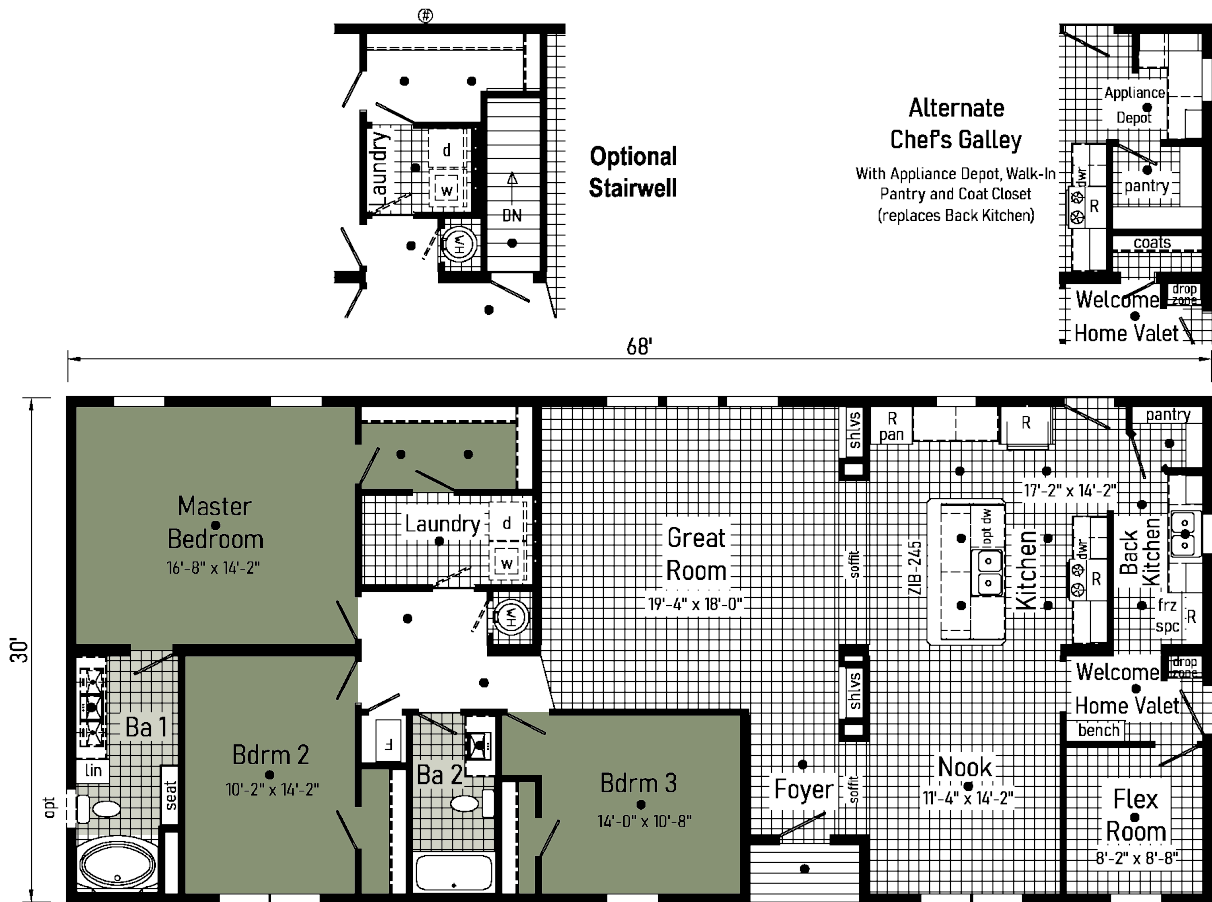
# Essence 18



**9L32683C**  
(2NM2426-V)

3268 | 2017 Sq. Ft.

# Essence 19



# Flex Room Options

1. The Back Kitchen - The kitchen is where we entertain, so the Back Kitchen is where the counter clutter goes (coffee maker, toaster, blender, etc.) Also cooking prep before and clean up after. Second freezer space allows for freezer or additional refrigerator since we never have enough storage for beverages.
2. Power Pantry - How we shop today is in bulk. Power Pantry provides bulk storage and can reduce the need for kitchen overheads, allowing the kitchen to be more streamlined and contemporary.
3. Welcome Home Valet - Entry into your home should be an inviting event. The Welcome Home Valet says "Welcome home it's time to kick back and relax." This area provides a location to store your personal belongings (coat, purse, backpack, shoes, cell phone, keys, etc.) After a stressful day from work, no one wants to enter past a stack of dirty laundry.
4. Connected Laundry - Let's put the laundry where it makes the most sense. Connected to the master closet and close to the secondary bedrooms. Shorten the chores by taking clothes directly from the dryer to the closet or removing the wrinkles from that shirt for an evening event.
5. Pocket Office - Busy households need a space everyone can use. Working from home or an area for the kids to do homework. The Pocket Office provides a private area to get away and concentrate on the task at hand or do some gaming without distracting others.
6. Clean-Up Crew - Whether your a mechanic, builder, farmer or hard worker that just needs that place to clean up after a busy day of work. Located directly off the side entry. The "Clean-Up Crew" provides a private bath to clean up prior to entering the common areas.
7. Winter Organizer - Located directly off the Welcome Home Valet the Winter Organizer is a place for all your winter gear. Hunters have a place to store their camo and the kids have a place for snow gear to dry. Shelves for storing boots, scarves, hats and gloves and a coat rod for coats, snow pants and overalls. Keep everything in one place!
8. Entertainer - For entertaining guests or family convenience, the beverage center may serve as a coffee bar, beverage center or for wine storage. It's a self-serve area for everyone.
9. Hobbyist - All hobbies require space! The Hobbyist offers countertop space for creating, cabinets for storing it all away and a sink for rinsing molds, brushes and more.

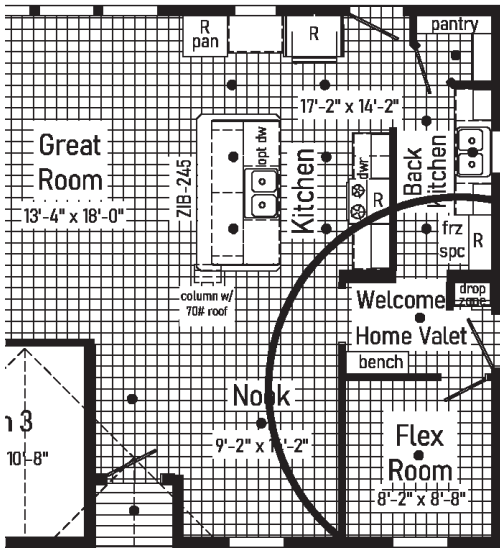
# FLEX MODEL HOMES

**9L32563A**

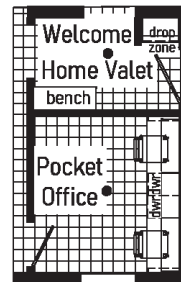
**9L32603A**

**9L32683C**

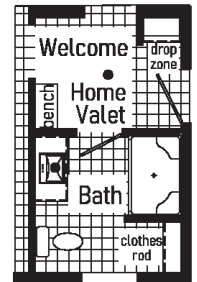
2NM2424-V    2NM2425-V    2NM2426-V



Flex Room Options to meet YOUR Lifestyle.



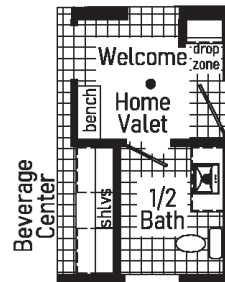
Work from Home



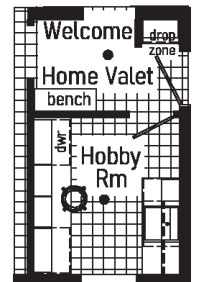
Clean-up Crew



Winter Organizer



Entertainer



Hobbyist





GOSHEN

1902 Century Drive  
Goshen, IN 46528  
574-971-3443



# M LANDMARK *Essence*



[www.commodore-in.com/inhouse-experience](http://www.commodore-in.com/inhouse-experience)

Connect with Us:



[www.commodore-in.com](http://www.commodore-in.com)

Your Independent Builder is:

**Note:** Because of varying state requirements and optional equipment, some or all of the utility locations may change per floor plan. (i.e. furnace, stairwell, etc.) Consult your factory representative for exact specifications.

Your purchase contract including options is with your retailer who is an independent contractor, not our agent, and is responsible totally for any alterations, exchanges, additions or attachments made in or to your home.  
AP 11/24

All descriptive representations of the products on this brochure are believed to be correct at the time of publication. However, due to continued product improvement and changes in suppliers design and production, accuracy cannot be guaranteed. Therefore, equipment colors, material specifications, prices and model availability are subject to change without notice.  
All information and images contained in this brochure are property of Commodore Homes and for the use by active dealers of the company only. ©