



THE  
*Residence*

MULTI SECTION AND MODULAR HOMES

**Clayton**  
middlebury

2025



# THE Residence

## STANDARD FEATURES

### INTERIOR

25 OZ. SHAW CARPET WITH 5# REBOND PAD & TACK STRIP  
8' FLAT CEILINGS THROUGHOUT  
STIPPLE CEILING FINISH  
FINISHED CEILING JOINTS  
1/2" DRYWALL THROUGHOUT  
BUILDER GRADE PRIMER THROUGHOUT  
"CLOSET MAID" VENTILATED WIRE SHELVING IN CLOSETS  
LED RECESSED CAN LIGHTS THROUGHOUT  
3" DOOR & WINDOW CASING AND 5" BASE TRIM  
2-PANEL WHITE INTERIOR DOORS  
2" CORDLESS VINYL BLINDS

### KITCHEN

42" KITCHEN HARDWOOD CABINETS W/CROWN  
KITCHEN ISLAND  
SOFT CLOSE DRAWERS & DOORS  
LUMBER CORE CABINET STILES  
SOFT CLOSE KITCHEN DRAWERS & DOORS  
3/4" ADJUSTABLE SHELVES IN OVERHEAD CABINETS  
8" STAINLESS STEEL DOUBLE BOWL KITCHEN SINK  
BRUSHED NICKEL FAUCETS THROUGHOUT  
SAMSUNG STAINLESS STEEL APPLIANCES  
30" FREE-STANDING ELECTRIC RANGE  
18 CU FT FROST FREE REFRIGERATOR W/ICEMAKER  
BANK OF DRAWERS  
DRAWER OVER DOOR CONSTRUCTION  
GFCI PROTECTED RECEPTACLES

### BATHS

60" FIBERGLASS TUB/SHOWER IN PRIMARY BATH & BATH 2  
HIGH PRESSURE LAMINATED COUNTERTOPS & BACKSPLASH W/  
MICROBAN ANTIMICROBIAL TECHNOLOGY  
PORCELAIN COMMODES  
SQUARE PORCELAIN LAVS  
POWER EXHAUST FANS - ENERGY STAR  
GFCI PROTECTED RECEPTACLES  
36" TALL VANITIES IN BOTH BATHS  
FURNITURE STYLE VANITY W/DOUBLE LAVS IN PRIMARY BATH  
STILE FRAMED MIRRORS - BATHS  
BRUSHED NICKEL FAUCETS THROUGHOUT  
BANK OF DRAWERS IN PRIMARY BATH

### INSULATION

ZONE III INSULATION PACKAGE  
- R-38 BLOWN CEILING INSULATION W/VAPOR BARRIER  
- R-21 FIBERGLASS INSULATION IN WALLS  
- R-27 FIBERGLASS INSULATION IN FLOORS  
- FIBERGLASS HEAT DUCTS WITH IN-FLOOR CROSSOVER

### EXTERIOR

NOMINAL 3/12 ROOF PITCH  
ARCHITECTURAL SHINGLES  
METAL FACIA  
VINYL VENTED SOFFIT

### EXTERIOR - continued

36" CRAFTSMAN FRONT DOOR W/THUMB LATCH  
36" 6-PANEL REAR DOOR W/DEADBOLT  
EXTERIOR LIGHT AT FRONT & REAR DOOR  
4 1/2" DUTCH LAP VINYL SIDING  
(2) EXTERIOR GFI RECEPTACLES  
(2) EXTERIOR FROST FREE FAUCETS  
ARGON LOW E VINYL WINDOWS W/3 OVER CLEAR GRIDS  
VINYL WINDOW SURROUNDS ON FDS

### UTILITIES

200 AMP 40/40 SERVICE PANEL  
CARRIER ELECTRIC FURNACE  
ECOBEE WIFI SMART THERMOSTAT  
40 GALLON HYBRID HEAT PUMP WATER HEATER  
WATER HEATER PAN WITH EXTERIOR DRAIN  
PEX PLUMBING  
WIRE & PLUMB FOR WASHER  
WIRE & VENT FOR DRYER  
RECESSED WHOLE HOUSE WATER SHUT OFF  
WATER SHUT OFFS THROUGHOUT  
GFI PROTECTED RECEPTACLES IN KITCHEN AND BATHS  
FURNACE CLOSE-OFF DOOR & WATER HEATER DOOR - VBP  
CONDUIT DROP FOR A/C  
SOLAR READY CONDUIT DROP

### CONSTRUCTION

STEEL I-BEAM RECESSED FRAME W/DETACHABLE HITCH  
2" X 6" FLOOR JOISTS - 16" O.C.  
T&G OSB FLOOR DECKING GLUED & FASTENED  
2" X 6" EXTERIOR WALLS  
30LB. ROOF LOAD  
RIDGE VENT ROOF VENTING  
LINKED SMOKE DETECTORS W/BATTERY BACK-UP IN MAIN LIV-  
ING AREA & ALL BEDROOMS  
7/16" OSB EXTERIOR SHEATHING W/WINDWRAP  
KWIKSET INTERIOR & EXTERIOR DOOR KNOBS  
W/MICROBAN ANTIMICROBIAL TECHNOLOGY  
SMOKE/CARBON MONOXIDE DETECTOR  
ZEHR ENERGY (EBUILT) (HUD)  
WHOLE HOUSE VENTILATION FAN

### MODULAR SPECIFICATIONS

2" X 10" FLOOR JOISTS - 16" O.C.  
R-21 WALL INSULATION  
R-49 ROOF INSULATION  
FIBERGLASS HEAT DUCTS  
2" X 4" INTERIOR WALLS  
2" X 4" MATELINE WALL  
METAL CROSS BRIDGING  
30LB. ROOF LOAD  
WHOLE HOUSE VENTILATION FAN  
40 GALLON ELECTRIC WATER HEATER

NOTES - WISCONSIN HAS NO PLUMBING



# THE *Residence*

## INDEX

NAME	MODEL	SIZE	SQ. FT.	BEDROOMS	BATHS	PAGE
Spring Meadow	4828-MS007-1	48x28	1264	3	2	4
Somerset Dr	5228-MS012-1	52x28	1369	3	2	5
Center St	5228-MS014-1	52x28	1369	3	2	6
Elm St	5628-MS018-1	56x28	1475	3	2	7
Hill St	5628-MS020-1	56x28	1475	3	2	8
Belvedere Blvd.	5628-MS065	56x28	1475	3	2	9
Michigan Ave	6028-MS026-1	60x28	1580	3	2	10
Tompkins Blvd	6428-MS029-1	64x28	1685	3	2	11
Butler Place	6428-MS056	64x28	1685	3	2.5	12
Hawthorne Dr.	6030-MS064	60x30	1800	3	2	13
Stratford Place	6630-MS062	64x30	1790	3	2	14



MODEL NUMBER:

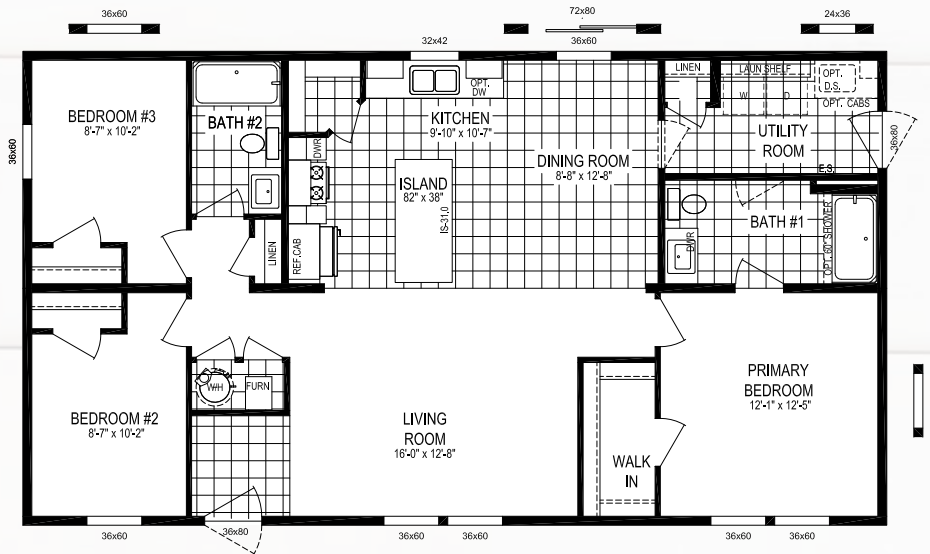
# 4828-MS007-1

48 x 28 | 1264 Sq. Ft. 3 Bed | 2 Bath

CLICK HERE FOR A 3D  
TOUR OF THIS FLOORPLAN!



## SPRING MEADOW



CLICK HERE FOR A 3D  
TOUR OF THIS FLOORPLAN!

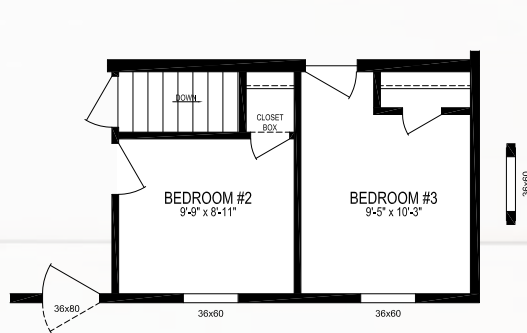
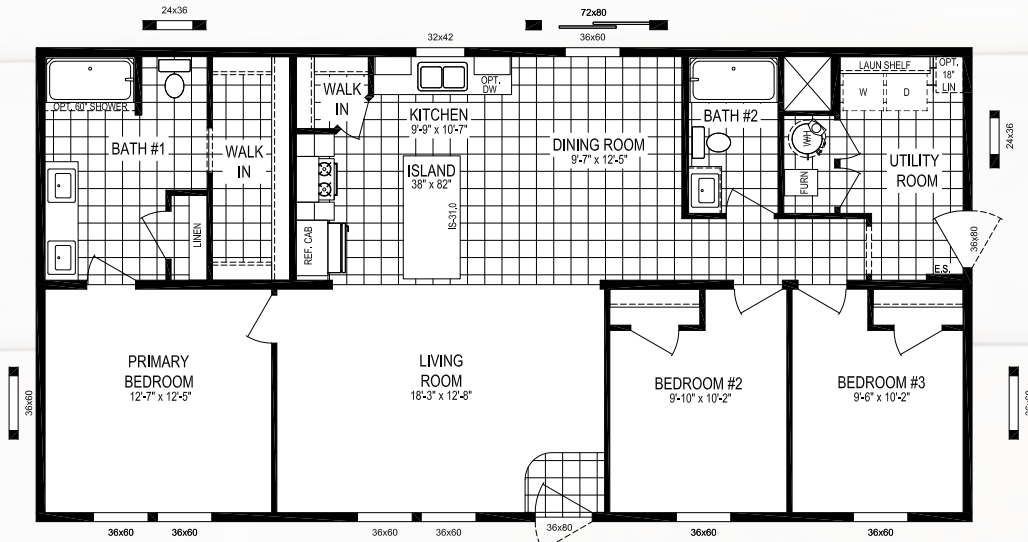


MODEL NUMBER:

# 5228-MS012-1

52 x 28 | 1369 Sq. Ft. 3 Bed | 2 Bath

## SOMERSET DR





MODEL NUMBER:

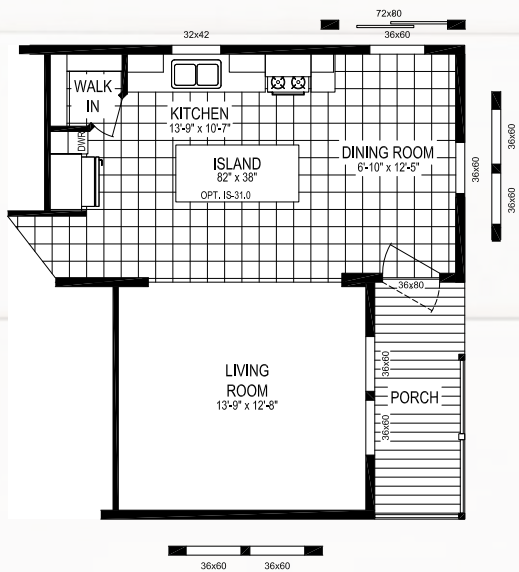
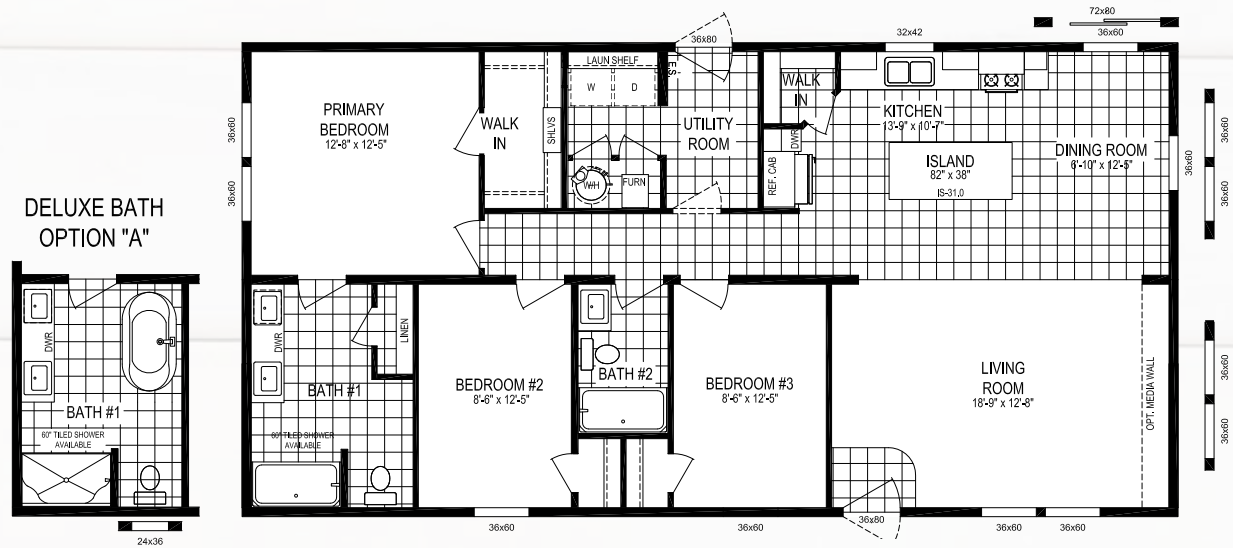
# 5228-MS014-1

CLICK HERE FOR A 3D  
TOUR OF THIS FLOORPLAN!

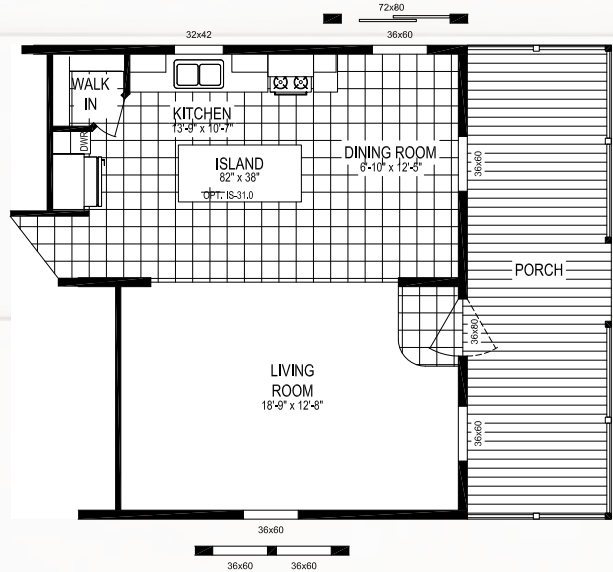


52 x 28 | 1369 Sq. Ft. 3 Bed | 2 Bath

## CENTRE ST



END ENTRY w/HALF  
FRONT PORCH OPTION



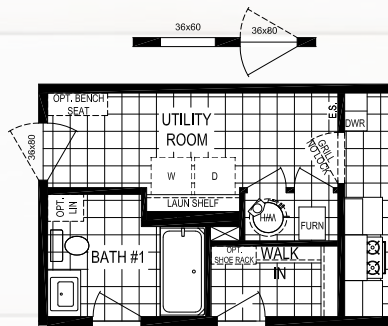
8' PORCH OPTION  
SHOWN w/END ENTRY OPTION

MODEL NUMBER:

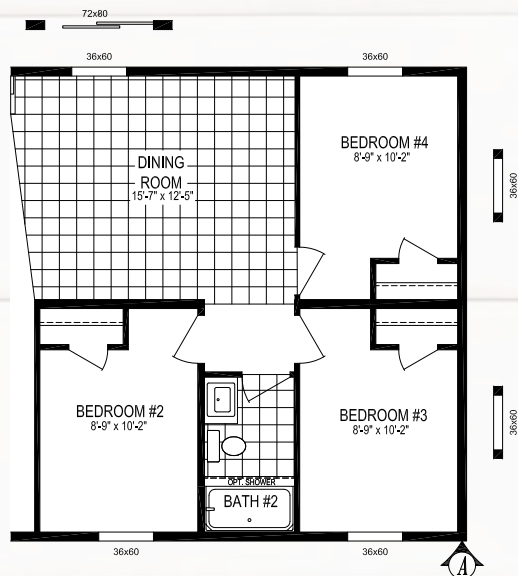
# 5628-MS018-1

56 x 28 | 1475 Sq. Ft. 3 Bed | 2 Bath

## ELM ST



OPTIONAL END ENTRY



OPTIONAL 4TH BEDROOM



MODEL NUMBER:

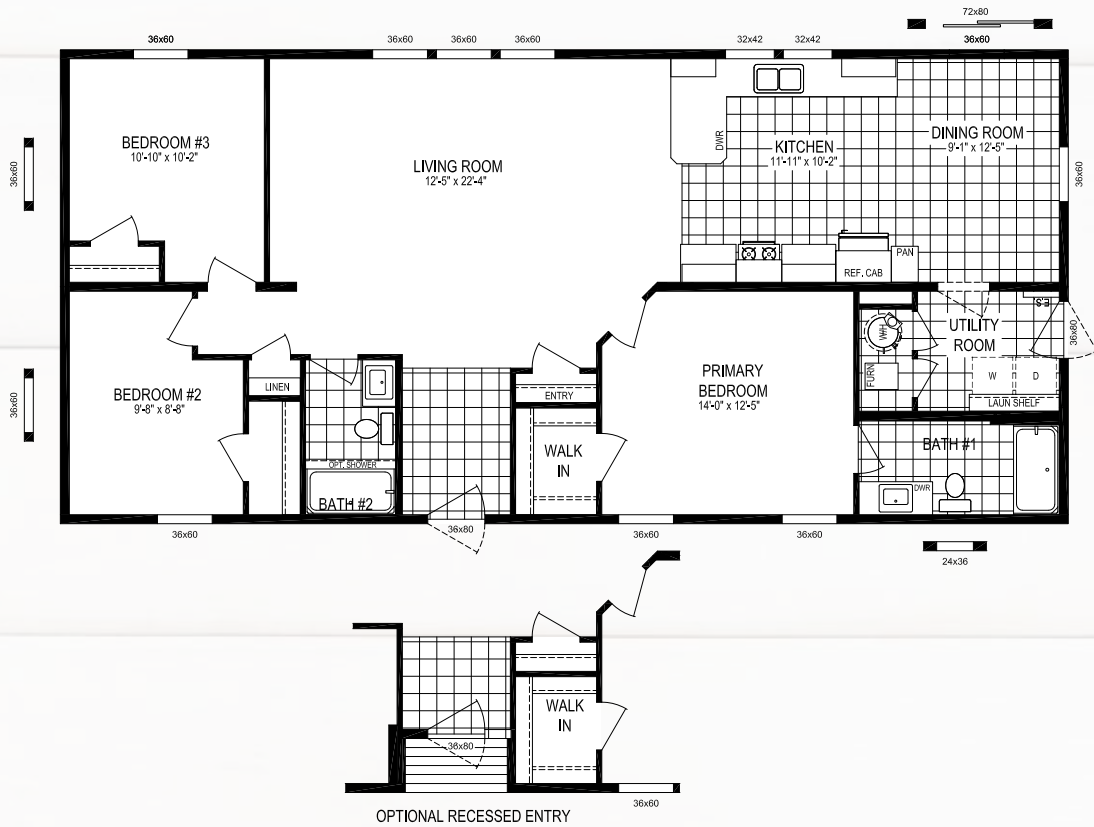
# 5628-MS020-1

56 x 28 | 1475 Sq. Ft. 3 Bed | 2 Bath

CLICK HERE FOR A 3D  
TOUR OF THIS FLOORPLAN!



## HILL ST



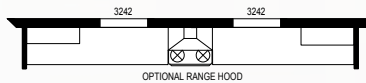
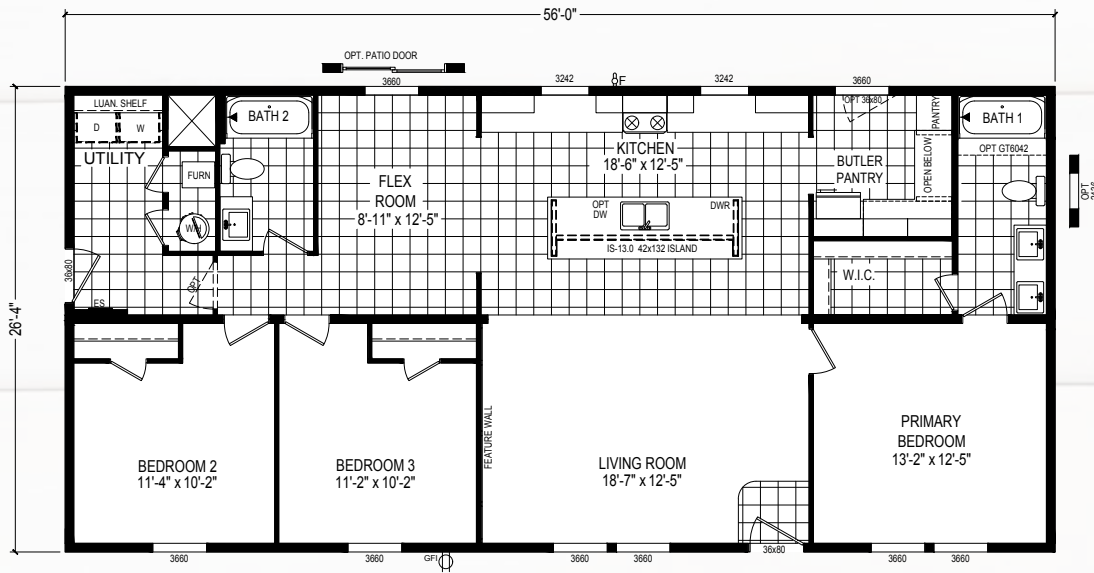


MODEL NUMBER:

# 5628-MS065

56 x 28 | 1475 Sq. Ft. 3 Bed | 2 Bath

## BELVEDERE BLVD

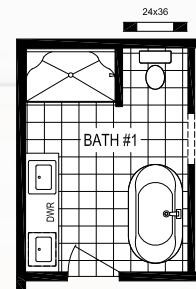


MODEL NUMBER:

# 6028-MS026-1

60 x 28 | 1580 Sq. Ft. 3 Bed | 2 Bath

## MICHIGAN AVE



DELUXE BATH OPTION "A"





CLICK HERE FOR A 3D  
TOUR OF THIS FLOORPLAN!



MODEL NUMBER:

# 6428-MS029-1

64 x 28 | 1685 Sq. Ft. 3 Bed | 2 Bath

## TOMPKINS BLVD



MODEL NUMBER:

# 6428-MS056

64 x 28 | 1685 Sq. Ft. 3 Bed | 2.5 Bath

## BUTLER PLACE



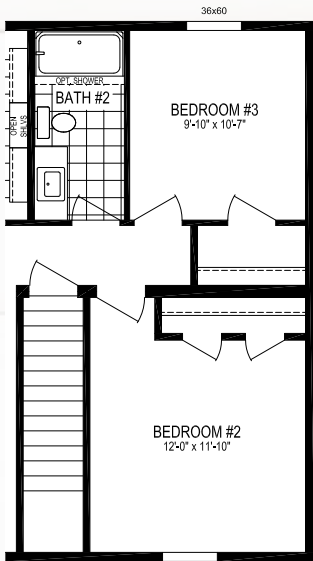
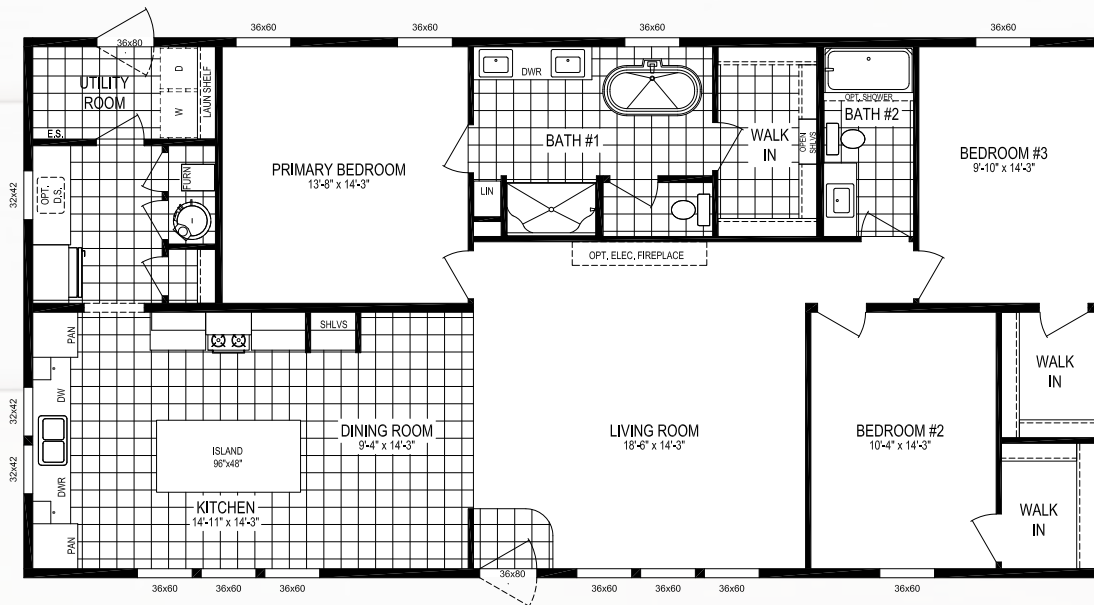


MODEL NUMBER:

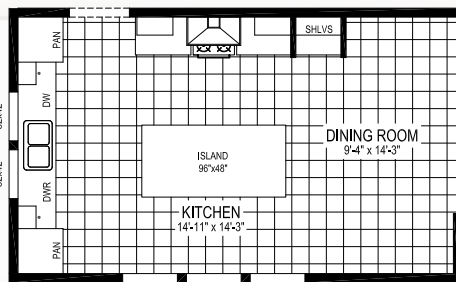
# 6030-MS064

60 x 30 | 1800 Sq. Ft. 3 Bed | 2 Bath

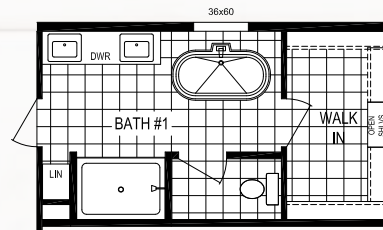
## HAWTHORNE DR



OPT. BASEMENT STAIRWELL



OPT. EURO RANGE HOOD



OPT. TILE SHOWER

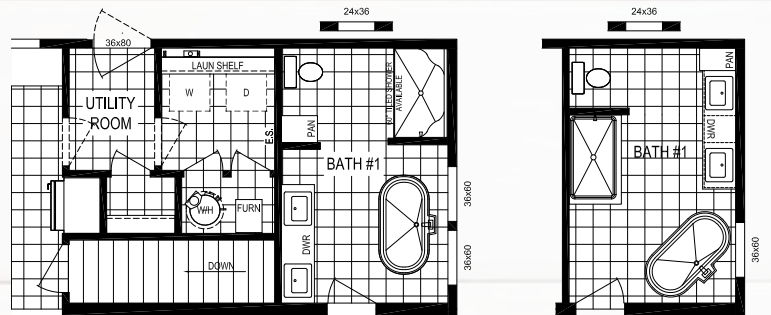
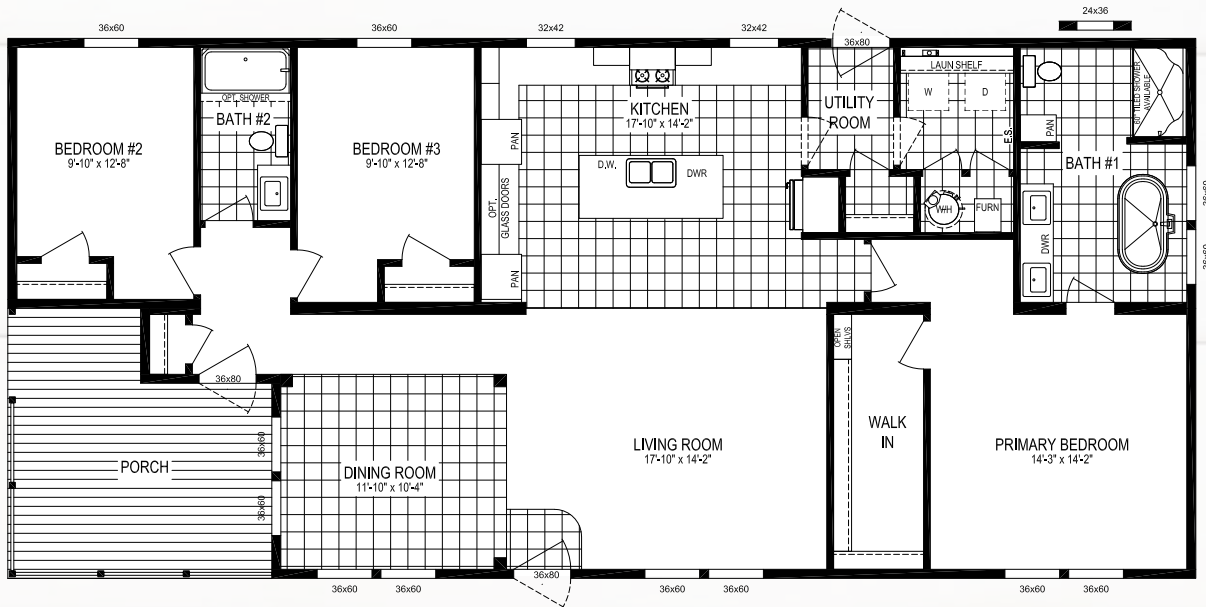


MODEL NUMBER:

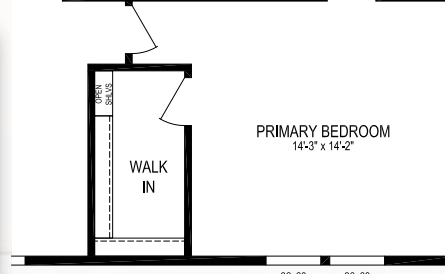
# 6630-MS062

64 x 30 | 1790 Sq. Ft. 3 Bed | 2 Bath

## STRATFORD PLACE



OPT. BATH 1



BASEMENT STAIRWELL  
OPT.





MULTI SECTION HOMES

THE  
*Residence*

**EXTERIOR PACKAGES**

**Flint Siding  
w/White Board & Batton**



**Sagebrook Siding  
w/Thistle Board & Batton**



**Brunswick Siding  
w/Mist Board & Batton**





MULTI SECTION HOMES

# THE *Residence*

## DORMER OPTIONS



20' Dormer w/Continuous Eave  
3/12 Pitch Only



20' Hinged Dormer w/6' Eyebrow  
5/12 Pitch Only



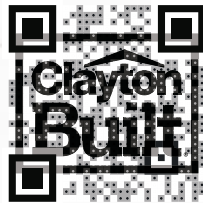
20' Hinged Dormer w/Continuous Eave  
5/12 Pitch Only



MULTI SECTION HOMES

THE  
*Residence*

**BRANDS**



Clayton Homes are Built Using Quality Brands

ecobee



Turn to the Experts.™



***Kwikset***



**SAMSUNG**







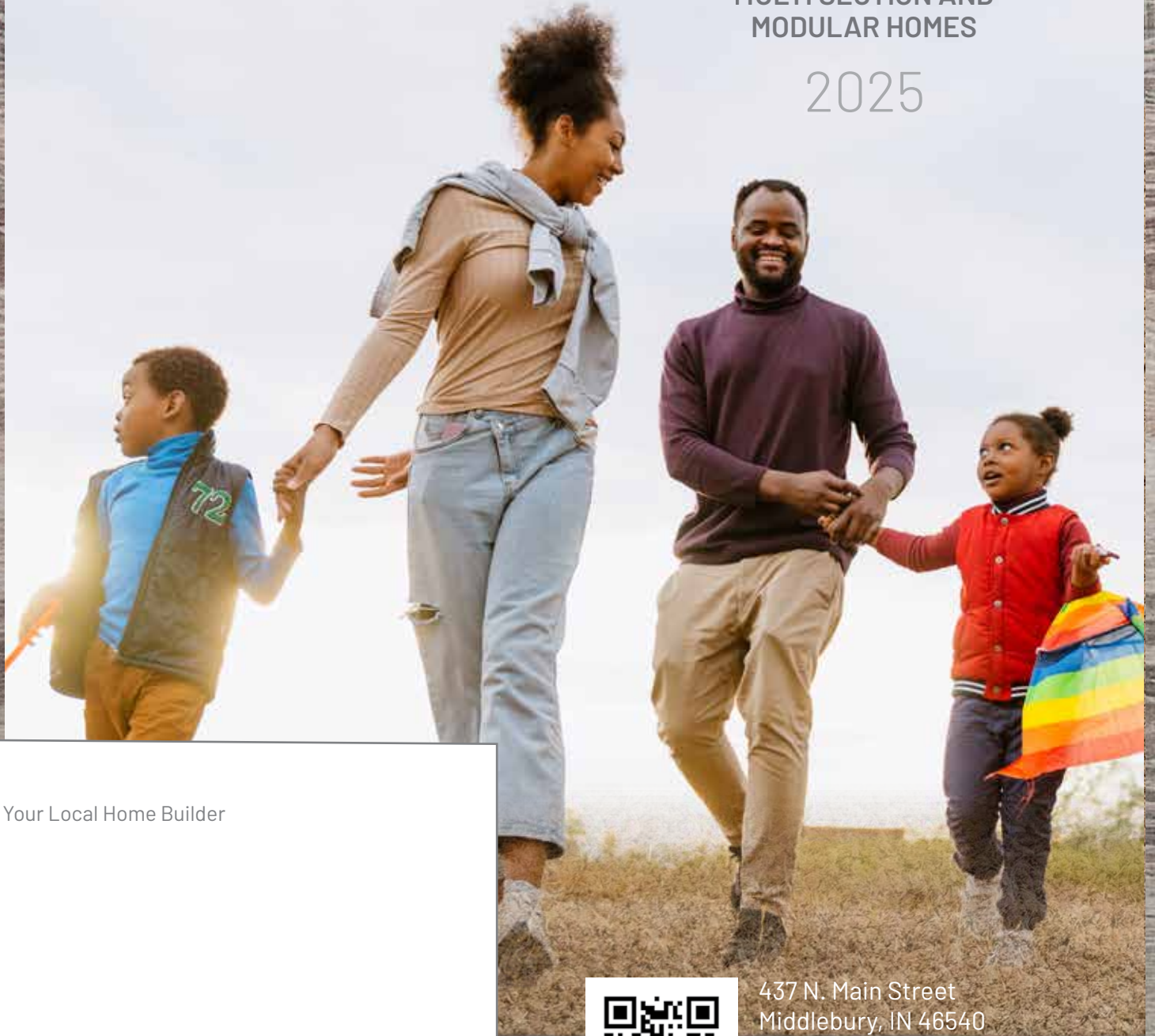




# THE *Residence*

MULTI SECTION AND  
MODULAR HOMES

2025



Your Local Home Builder



437 N. Main Street  
Middlebury, IN 46540  
574.825.7500  
574.825.7569 fax

[www.claytonmiddlebury.com](http://www.claytonmiddlebury.com)

Because our company has a continuous product update process, specifications, floor plan lay-out and dimensions shown on this literature are subject to change without notice or obligations. Construction and design specifications as well as features presented conceptual, therefore should not be used as actual construction data and may not be offered in all series or models. Our Retailer will provide accurate, up-to-date information on available options and specifications for your home. 12/24

**Clayton**  
middlebury